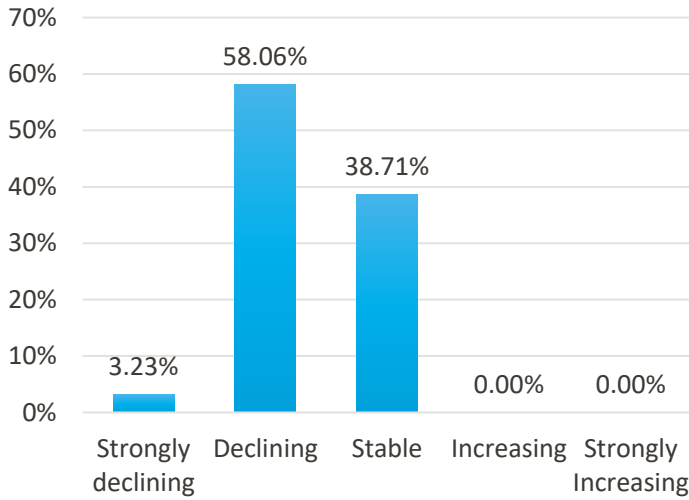


## Perception of Industry Engagement in Universities 2020-2021

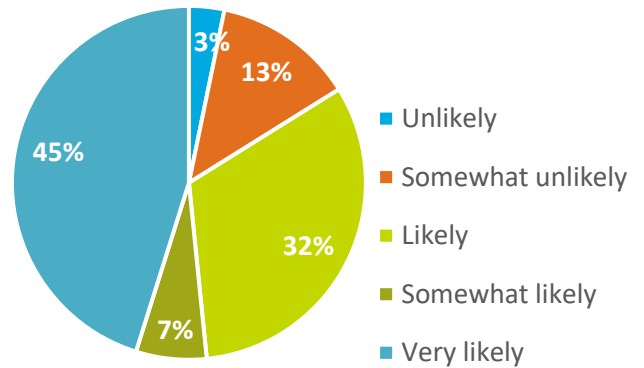
May 18-May 25, 2020 | n=31

What is your current perception of industry investment in universities for the coming academic year?



A majority of academic and industry respondents (61%) believe industry investment will decline in the coming year, and the rest say it will remain stable. **No respondents said they believe it will increase.**

How likely are you to pursue new university-industry partnerships in the next 12 months?



**A strong majority of industry and academic respondents (84%) said they were likely or very likely to pursue new partnerships.**

**Among industry members only, the strength of the strategic partnership plays a clear role in which partners are receiving the most funding now.**

Thinking about universities that are receiving the highest proportion of your funding right now, in the context of COVID-19, how would you characterize the relationship? (n=9)



### Breakdown of industry sector types responding to the survey:

Utilities, energy & extraction	2	Healthcare & Pharmaceuticals	1
Automotive	2	Telecom, Tech, Internet, Electronics	1
Airlines & Aerospace	1	None of the above	1
Food and Beverages	1		