



UIDPCONNECT
2020

The Swedish Way of Doing Things: Opportunities and Peculiarities

September 23, 2020 8-8:30 AM EDT



Moderator
Karen Heidelberger
Deerfield Management



Richard Cowburn
Karolinska Institutet



Kristina Sandstrom
J&J/Janssen



Strengthening
University-Industry
Partnerships

The Swedish Way of Doing Things: Opportunities and Peculiarities

Richard Cowburn – Karolinska Institutet

Kristina Sandström – Janssen Pharmaceuticals N/V

”

Our goal is clear: KI shall maintain and strengthen the position as one of the world's leading medical universities.

Ole Petter Ottersen
President, Karolinska Institutet

07 September 2020

Karolinska Institutet – A medical university

3

Photo: Erik Flyg

Karolinska Institutet

OUR VISION

**We are advancing
knowledge about life
and strive towards
better health for all.**



Strengthening
University-Industry
Partnerships

Research at KI

From basic molecular biological research to clinical epidemiology and care sciences.



6,298 Number of publications
(Articles och Reviews)

Collaboration



Close collaboration and innovation are an important part of the transition of knowledge and results to the community. Such transitions will promote better health and cure disease.



Strengthening
University-Industry
Partnerships

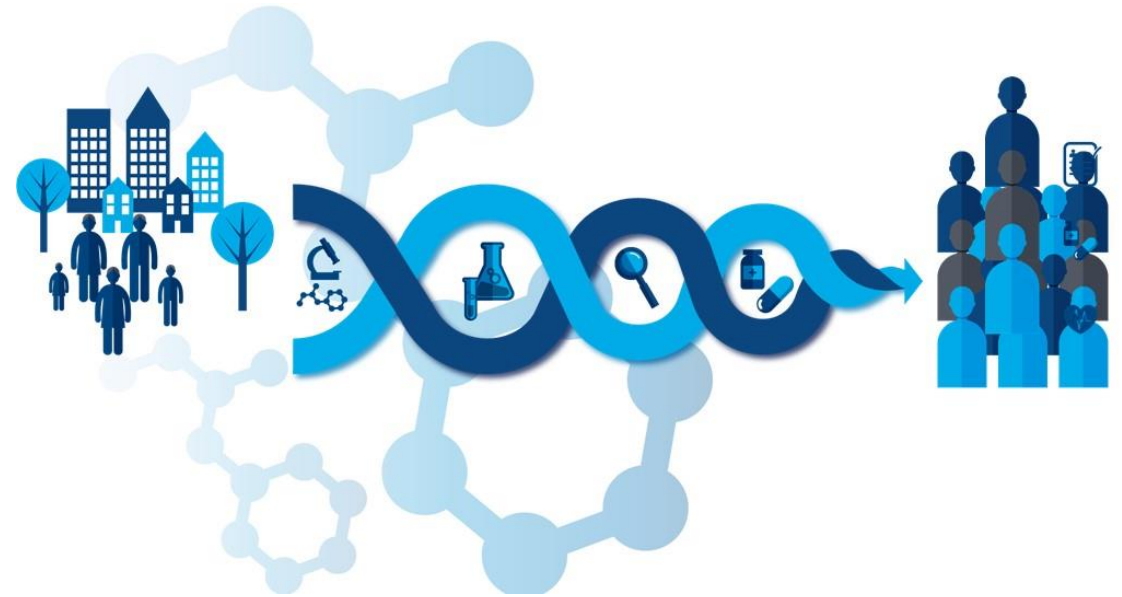
A peculiarity - The professor's privilege

- Swedish academic research staff own the results of their work (unless otherwise agreed).
- This has consequences for how KI and other universities work with:
 - Collaboration agreements with industry
 - Tech transfer
 - Support to entrepreneurs and starting up companies

Opportunities

Industry partnering using (unique) linkable data

- Over 100 national National Healthcare Quality Registries
- Contain individualized data on medical interventions, procedures and outcomes.
- Integrated into clinical workflows
- Unique personal ID numbers - link data from millions of people in different registers
- Multi-generations



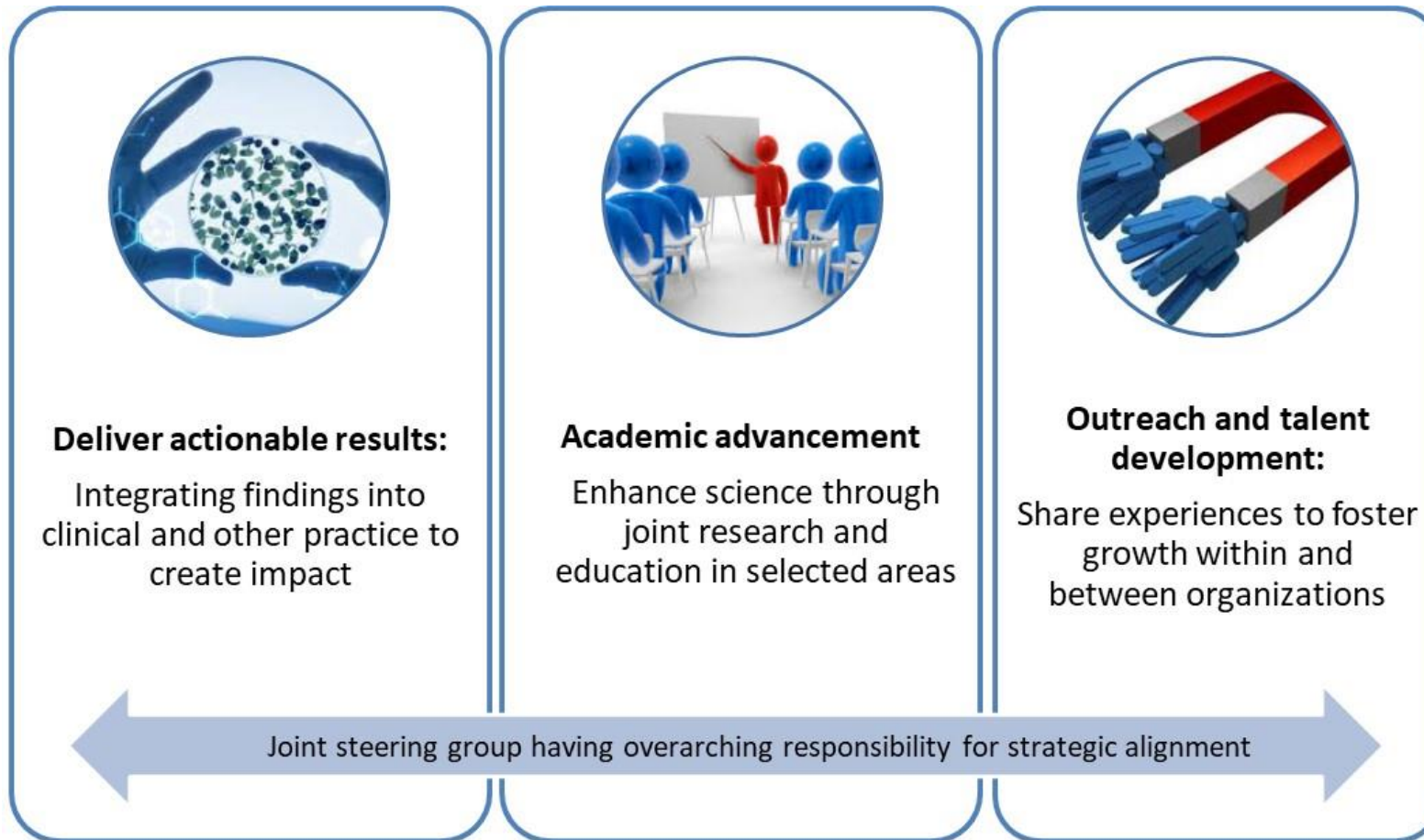
– linking genotypes (omics) and phenotypes to create novel longitudinal cohorts

Karolinska Institutet partnership with Janssen

- Established 2015 with Janssen Global Commercial Strategy Organization (GCSO) – based in Belgium
- Twice extended through to end of 2022 (currently)
- Expanded 2019 to include Janssen Research & Development (JRD) – based in the US

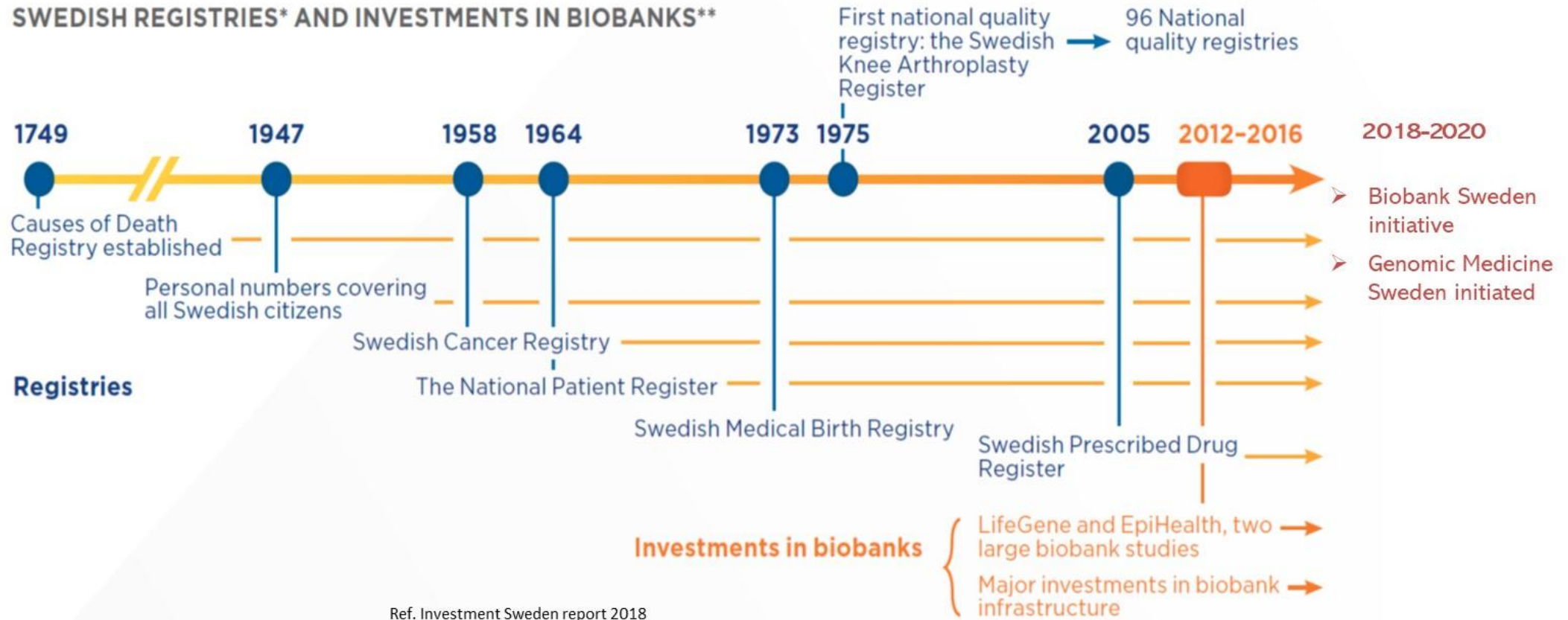
- Structured and governed so as to:
 - Ensure compliance and deliverables
 - Build a portfolio of projects and thereby create longevity
 - Achieve traction and buy-in from multiple stakeholders in complex organisations

A partnership based on solid foundations



A long history of Big Data in Sweden

SWEDISH REGISTRIES* AND INVESTMENTS IN BIOBANKS**



Creating value in:

Population Epidemiology

- Population disease burden,
- Patient flows
- Treatment patterns
- Comorbidity burden
- Matched population controls
- Time trends reflecting innovation impact or unmet need

Longitudinal outcomes

- Loss in expectation of life
- Unmet medical needs
- Surrogate endpoints
- Time to disease outcomes/exposures (including omics)
- Overall and cause specific survival



Health resource utilisation and societal impact

- Family burden of disease, with population controls

Pivotal for Market Access but a growing need also in earlier stages to provide guidance to R&D design.

Unique opportunities to combine data in Sweden and look at care giver burden etc.

THANK YOU FOR YOUR TIME



Strengthening
University-Industry
Partnerships
