

Considerations for University Personnel Working on Industry Campuses

September 14, 2022



Strengthening
University-Industry
Partnerships

Introductions



Mark Schmidt, Ph.D.

Associate Vice Chancellor, Partnerships, NC State University



Peter Carver, Ph.D.

External Innovation Manager, Eastman Chemical Company



Fadwa Benkessou, Ph.D.

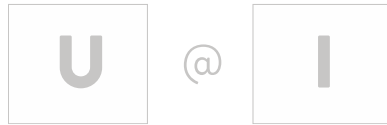
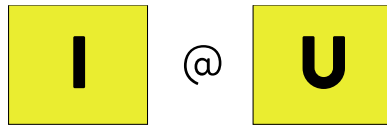
Academia-Industry Alliance Manager, Karolinska Institutet

Presentation Objectives

1. Share and learn (working session)
2. Address considerations – determine means for additional resources
 - Explore examples and experiences
 - Address key factors in play

Background – Industry Personnel at Universities

- UIDP publication (2017) – 'Co-Locating Industry Personnel on University Campuses'



- Example engagements

Career fairs – job interviews

Company seminars – career opportunities

Researcher collaborations

Visiting lecturers

Corporate seminars – faculty and students

Facility and equipment use

Sponsorships

Advisory boards

Research development – clusters

Research parks

Consortia

Campus visits

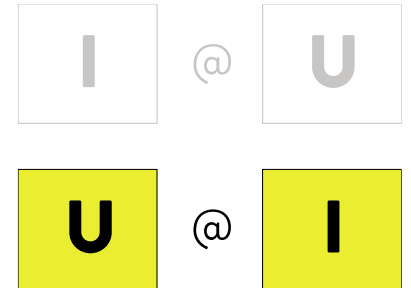
Background – Industry Personnel at Universities

- Key factors / attributes
 - **Space** – shared costs and management of dedicated space
 - **Activities** – joint events, research
 - **Equipment** – access to shared equipment
 - **Research** – common research and commercialization interests
 - **Engagement** – support / involvement from leadership
 - **IP** – researcher incentives to collaborate – explore joint IP
 - **IP** – range of intellectual property (IP) frameworks
 - **Exchange** – mutual idea flow between company and university
 - **Access** – access to unique world-class researchers
 - **Publication** – joint publications and co-developed IP
 - **Students** – working side by side with industry researchers

Today – University Personnel on Industry Campuses

- Example engagements

- Sabbatical
- Consulting
- PhD students
 - Use of industry facilities/equipment
 - Interns
 - Dissertation engagements
- Joint employment
- Conducting experiments – specialized equipment or data
- Advisory board members (out of scope)
- Undergraduate interns (out of scope)
- Visiting speakers (out of scope)



Why Embed Onsite for External Innovation?

- Partnership becomes a relationship – this is NOT contract research
- Face-to-face interactions improve trust
- Industry may have access to 1000s of faculty
- First-hand appraisal of PhD students and postdocs
- Academia becomes more aware of where industry intends to go
- Academia may answer questions industry is unlikely to ask internally

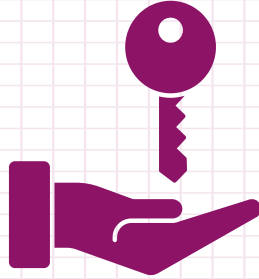
What's Needed for Onsite External Innovation?

- Space to live, work... and park
- Access to facilities
- Reasons to collaborate – what is in it for both parties?
- Master Research Agreement – questions around IP already agreed
- With MRA, projects / services can begin within weeks rather than >1yr
- Most of all – the right people... relationships

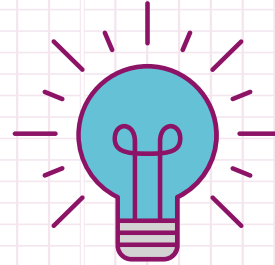
► Considerations when Entering in an Academia-Industry Partnership



Confidentiality



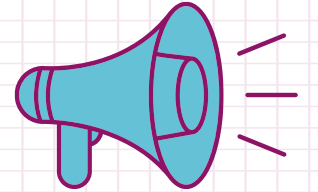
Ownership



Intellectual Property



Financing



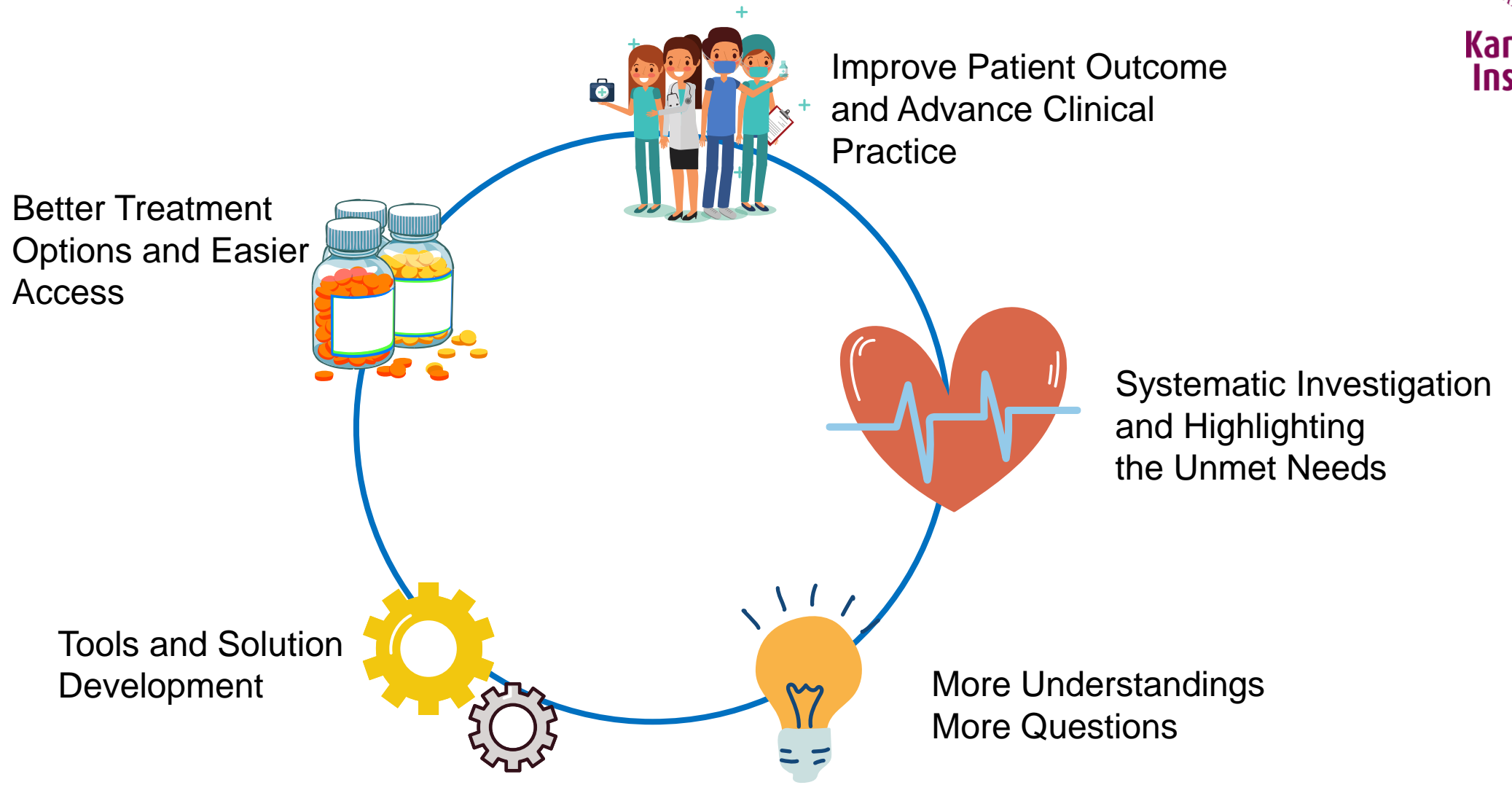
Publication

▶ Careers Outside/Inside Academia

- Career Service cover up to **40 internship positions** per year (1-3 months with a financed salary) at a company or organization within both private and public sector
- The program is open to **PhD students** (enrolled in the doctoral course Career skills for scientists), **Postdocs** and early career employed at KI
- Industrial postdocs and PhD positions



Impact of Academia-Industry Partnership



Discussion

- From a university or industry perspective, have you had experience with university personnel working from industry campuses?
 - Common expressions?
 - Issues?
 - Opportunities?
- Are there similar issues in play among university personnel working from industry...as for industry personnel working from universities?
- What formal UIDP resources would you like to see on this topic?