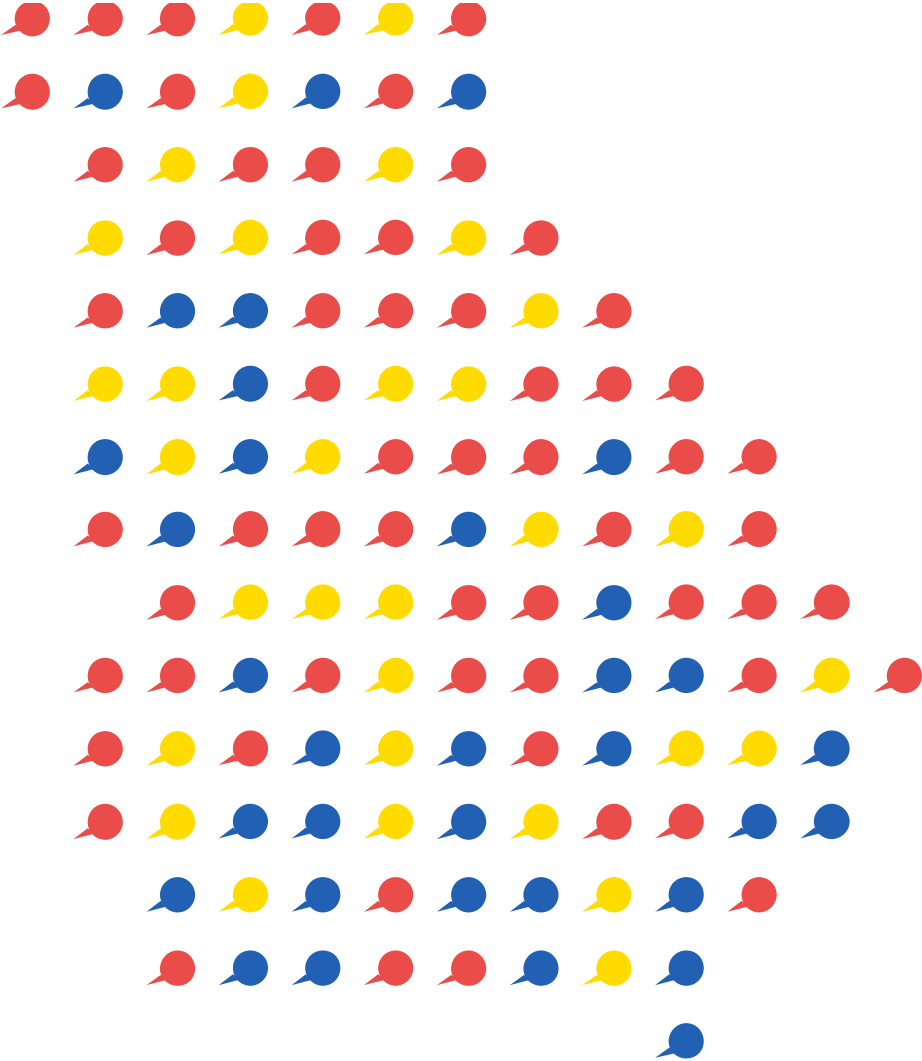




# Partnership for Inclusive Innovation



Clarence Anthony Jr., PhD  
Workforce Development Manager

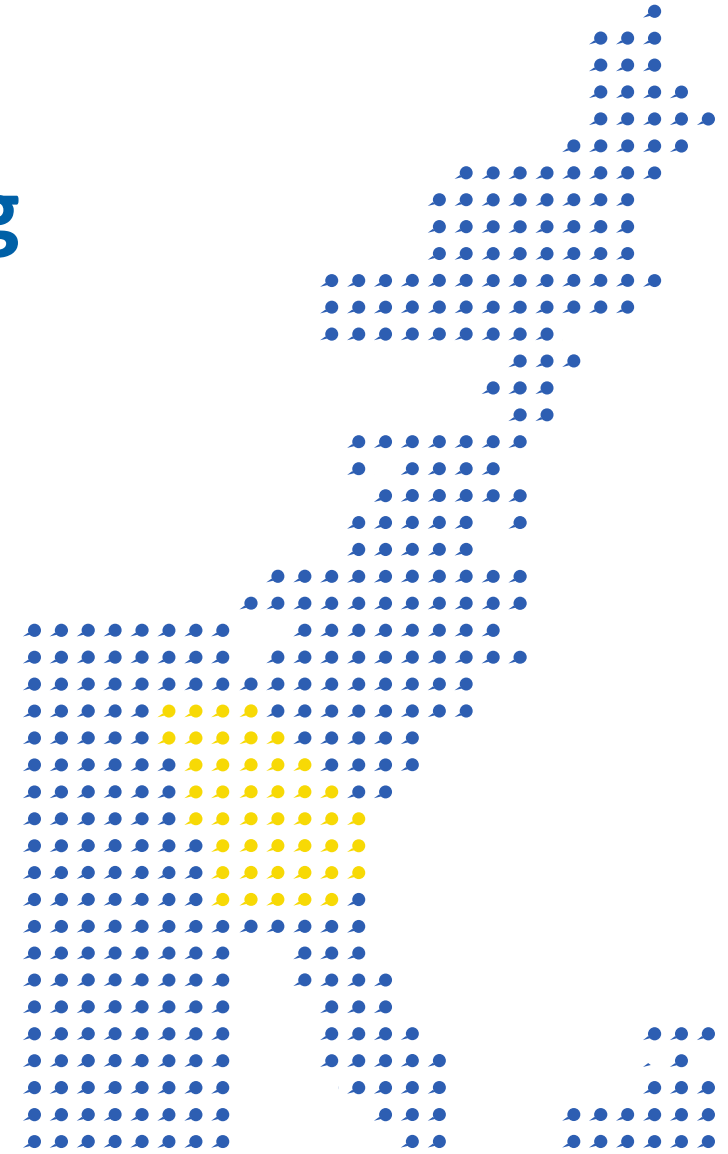




# Our Mission

## To advance established and emerging **innovators** for a stronger Georgia

- Promote shared innovations that drive inclusion and growth
- Advance existing entrepreneurs while identifying and helping new innovators succeed
- Establish Georgia as the East Coast Tech Capital
- Find and unlock the promise of innovators who have traditionally been shut out
- Activate potential

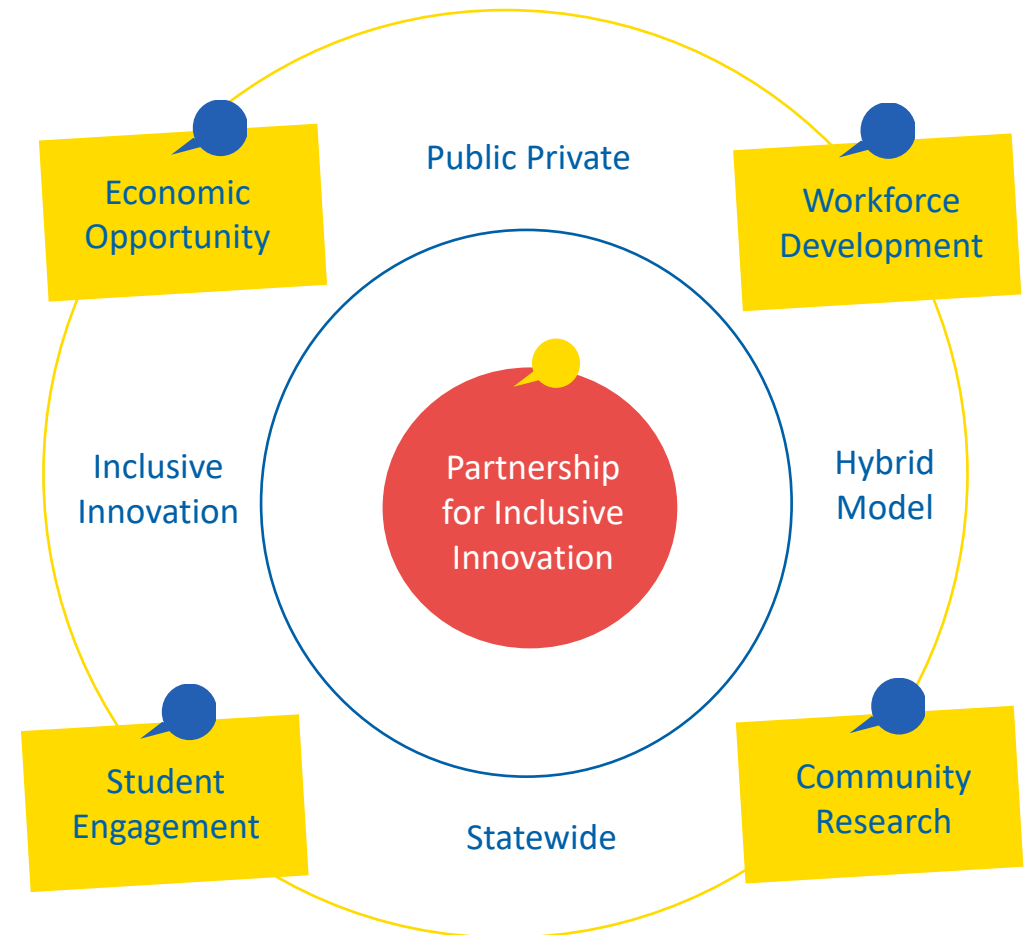




# Our Approach

The Partnership fosters a statewide connected innovation ecosystem for all. A number of organizations overlap with some of the aspects of our work. Few organizations, however, shares all four of the hallmarks we use to identify, share and accelerate innovations that spur transformational growth and economic and community success:

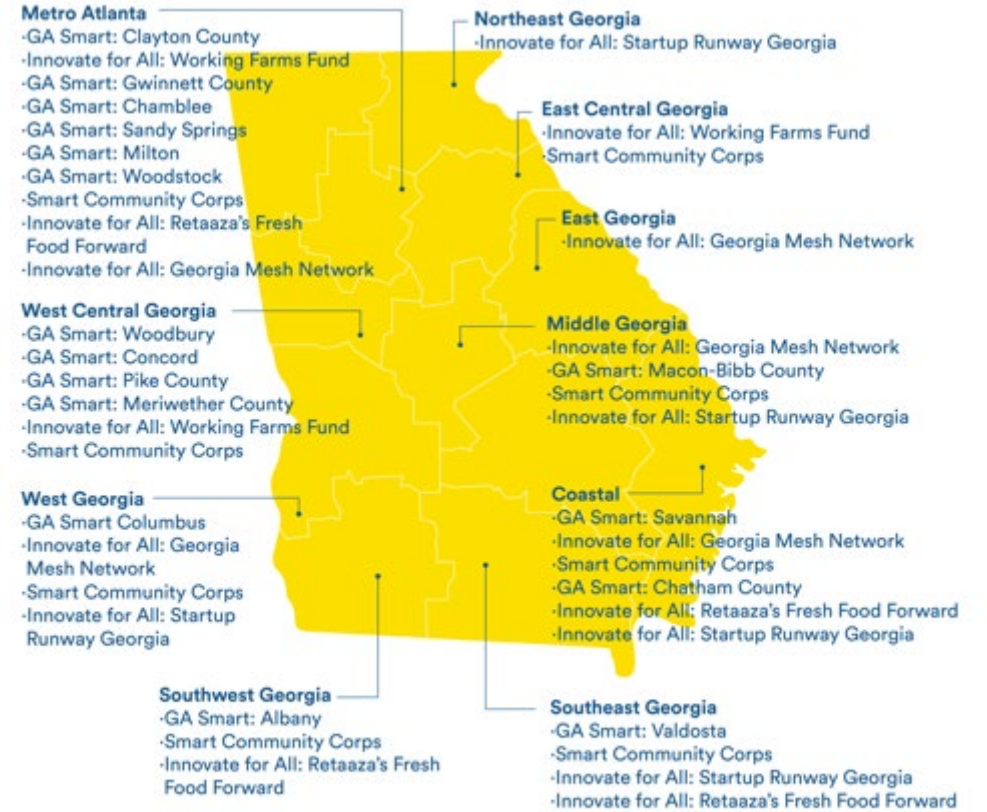
- A public/private coalition
- Statewide activity and impact throughout Georgia
- Defining and advancing inclusive innovation across geographic, racial, gender and socio-economic equity
- A hybrid model that combines grantmaking and hands-on program operation





# Enter the State of Innovation

# Keep Georgia on Your Mind.





# Thank You

Visit our website: [Pingeorgia.org](https://pingeorgia.org)

Follow us: [@pingeorgia](https://twitter.com/pingeorgia)

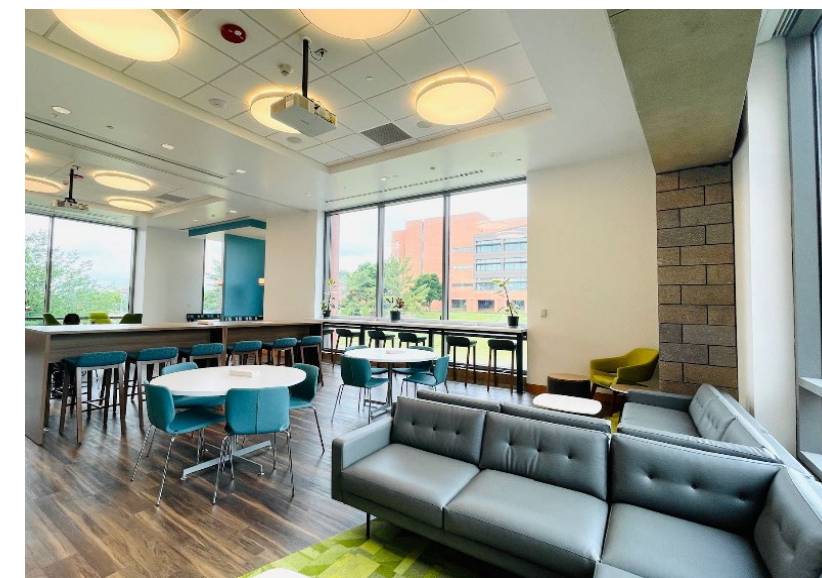




# INNOVATION SPACE

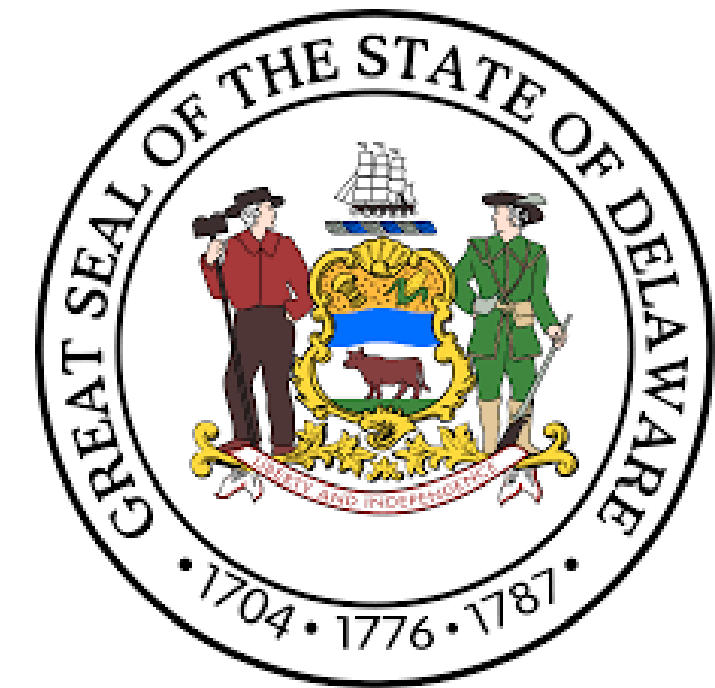
AT THE EXPERIMENTAL STATION

FOUNDED 2017





# Our Foundational Partners



Combined over \$30m in contributions including 130,000 ft<sup>2</sup> of modern lab space, scientific equipment and business building expertise

# The Experimental Station

Bedrock of Innovation since 1903



Bill Gore



## Small city of innovation & research

- 40+ buildings & 2.3m ft<sup>2</sup> of lab/office space
- Configured to support innovation from bench to scale-up to application development



- › NYLON INTERMEDIATES
- › TiO<sub>2</sub> PROCESS
- › INK JET TECHNOLOGY
- › H<sub>2</sub>SO<sub>4</sub> PROCESS
- › NEW HARVEST™
- › SORONA®



- › NYLON, PVC, PET, NEOPRENE, DACRON®
- › TEFLON® DISPERSION
- › 2,4-D HERBICIDES
- › UREA HERBICIDES
- › COLLOIDAL SILICA
- › VAZO®



Frank Martinez



- › KEVLAR®
- › NOMEX®
- › LYCRA®
- › TYVEK®
- › ORLON®

PET BOTTLES

- › HYPALON®
- › ELVACITE®
- › ELVAMIDE®
- › BUTACITE®
- › SELAR® RB
- › MINLON®

- › SUPERTOUGH NYLON
- › SUPERTOUGH DELRIN®
- › DUPONT'S GLASS REINFORCED NYLON
- › ZENITE® LCP
- › ZYTEL® DMX

- › RELIANCE®, LONDAX®, GLEAN®, ACCENT®, PLENISH™, CAPSTONE®

- › NORDEL®
- › HYTREL®
- › VITON®
- › KALREZ®
- › VAMAC®
- › NOBEL PRIZE WORK CHARLIE PEDERSEN

- › COZAAR®
- › SUSTIVA®

SOLAMET® PV17

- › RISTON®
- › CYREL®

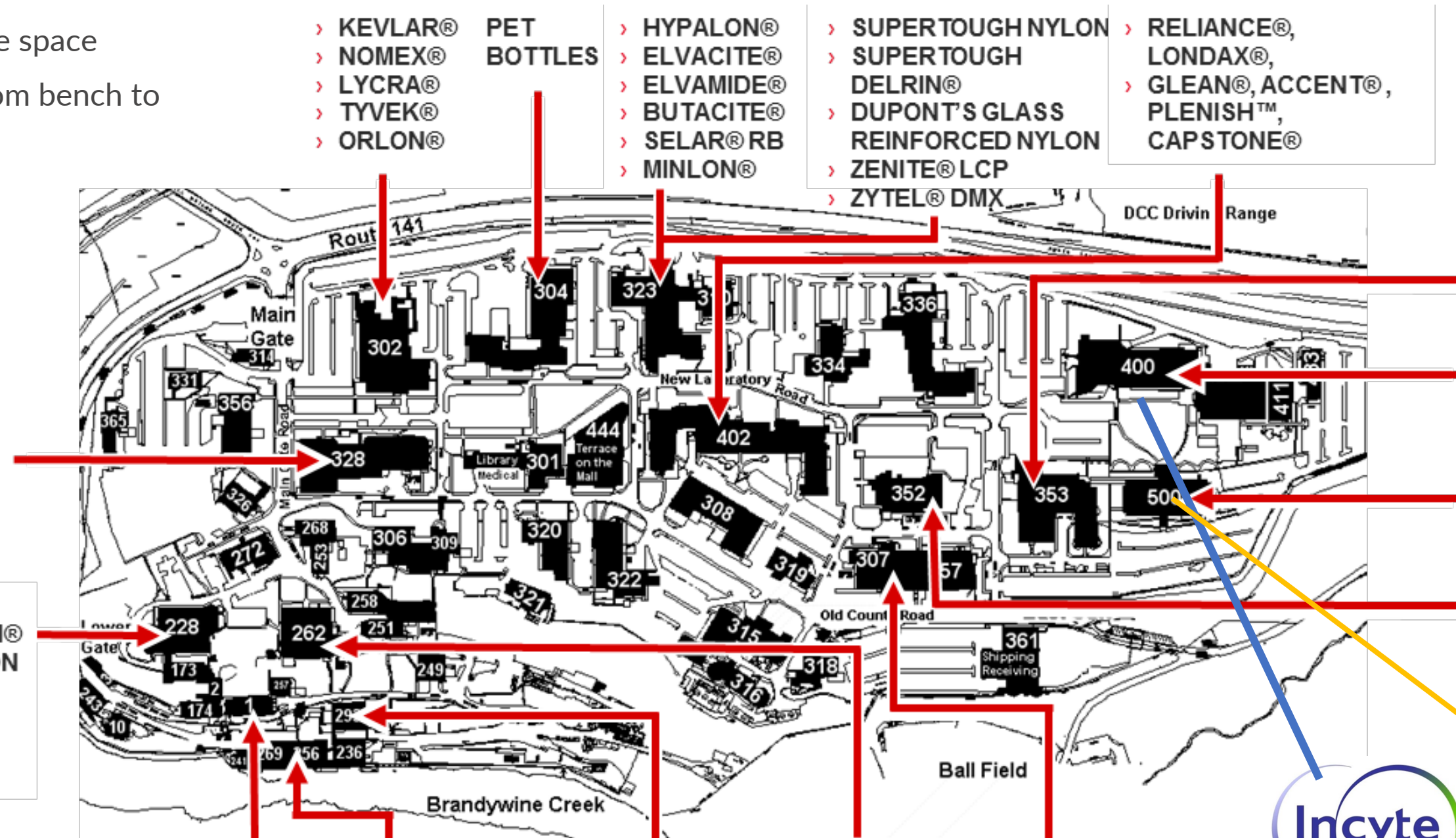


- › ALKYD
- › RESINS
- › SURLYN®
- › TEFLON® FEP
- › ELVAX®, ELVALOY®
- › NAFION®, VESPEL®

KAPTON®

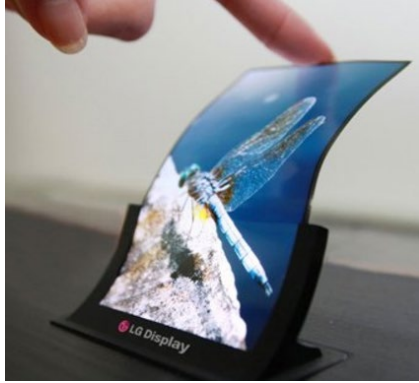
- › NYLON AND POLYESTER
- › CFC ALTERNATIVES

- › QUALICON®
- › BAX®, RIBOPRINTER





# Our Right to Win



**Advanced Materials**



**Healthcare**



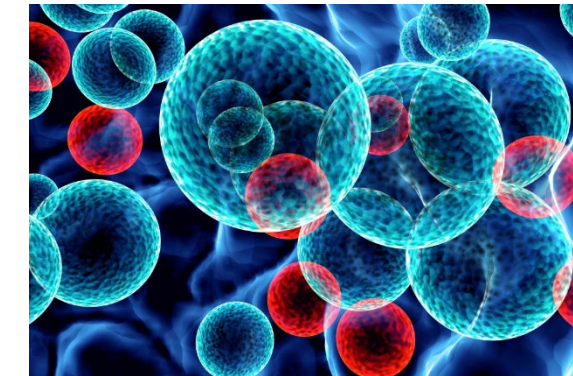
**Food/Nutrition/Ag**



**Chemical Ingredients**



**Renewables**



**Industrial Biotechnology**

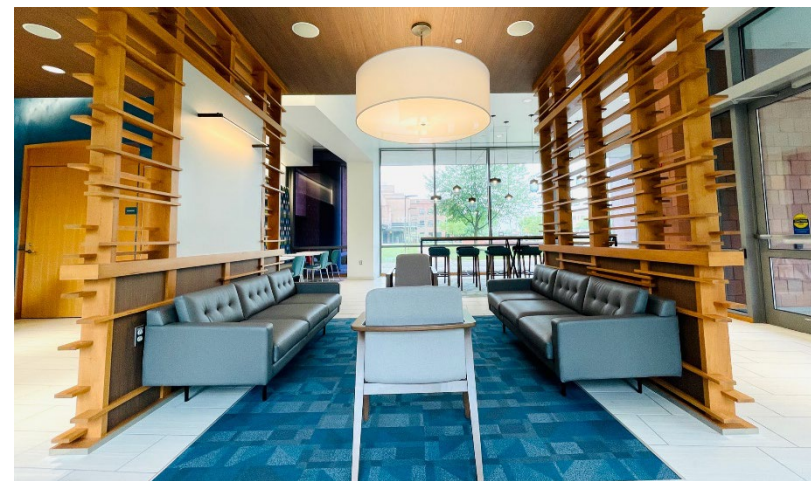
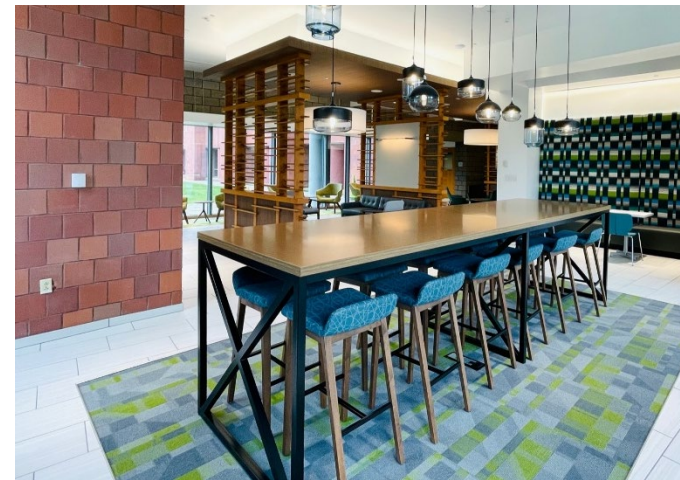
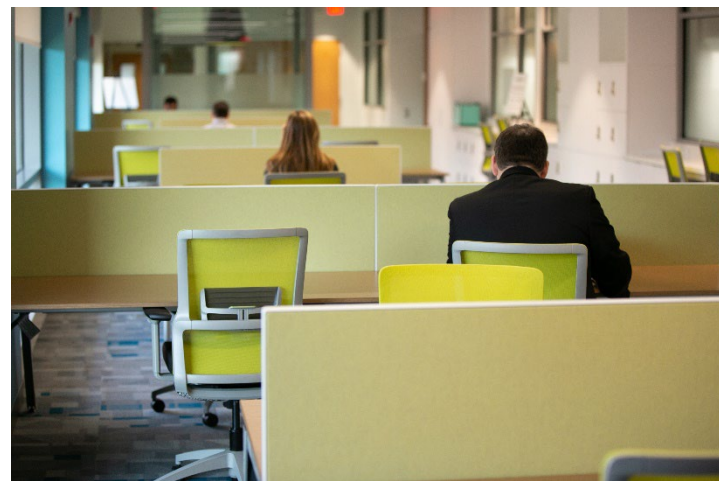
**Science Entrepreneurship.**



# The Home for Science Entrepreneurs



The Delaware Innovation Space is a non-profit (501c3) venture development organization and innovation ecosystem that serves science-based entrepreneurs and pairs them with premium, fully equipped and supported lab and office space with unparalleled access to business building services and growth partners



Offices / Desks / Common Areas

Laboratory Space



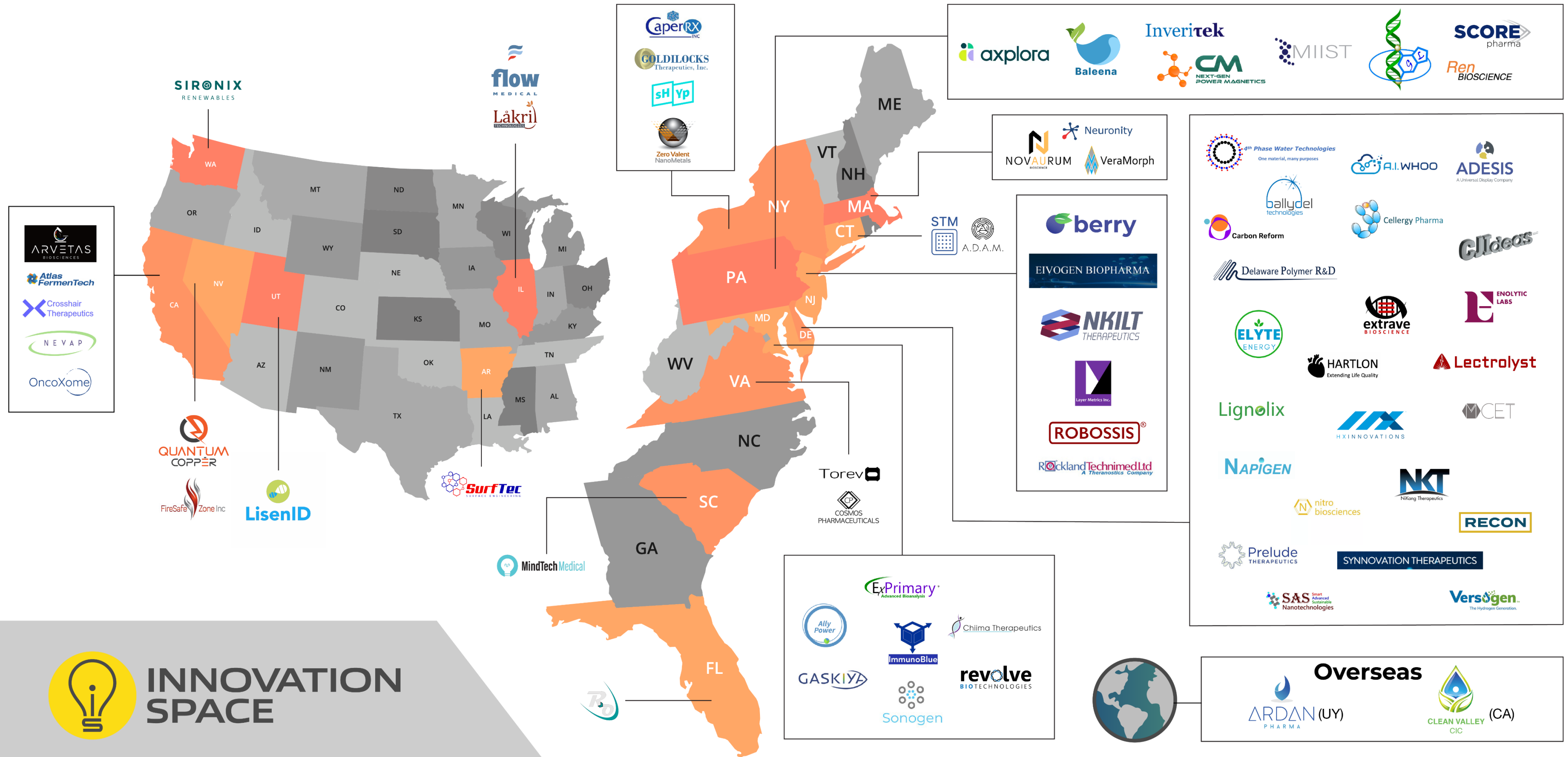
Leveraged Services & Equipment

Business/Technical Experts & Mentors  
Structured Programs

Funding



# Innovation Is Everywhere. So Are We.





# Backyard Economic Impact



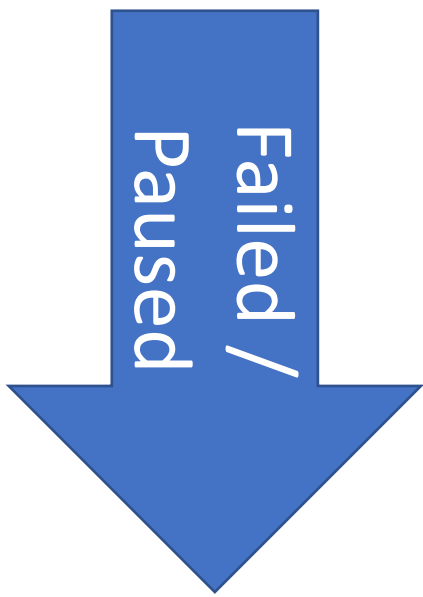
Wilmington, Delaware



- Availability of Investment (Public + Private)
- Quality & Capabilities of Facilities/Labs
- Access to Talent
- Access to Market/Partners
- Marketing/Awareness
- Proximity to Founders



- Further Growth Space
- Transition to Manufacturing
- Ready for Long-term Home



- Inability to attract funding/investors
- Team dynamics
- Poor product/market fit
- Shifts in market

  <p>Contract R&amp;D Services</p>	      <p>Chem / MatSci Startups</p>	  <p>SYNNOVATION THERAPEUTICS</p>    <p>Biotech Startups</p>	    <p>Corporate Subsidiary Growth</p>
--	---	--	--

# Our Impact 2017 - 2023



**>100**

**Companies  
Supported**



**>400**

**Jobs Created  
or Retained**



**>\$800M**

**Funding Raised  
by our Startups**