



PennState
Huck Institutes of
the Life Sciences



CLAFLIN
UNIVERSITY
The World Needs Visionaries



Sustainable Research Partnerships with Emerging Research Institutions (SUSTAIN-ERIs)

April 19th 2023, 9:35 to 10 a.m.

HBCU Engage and UIDP Nashville



Dr. Nicholas John Hill, Dean of School of Business, Clafin University



Dr. Camelia Kantor, Associate Director, Huck Institutes of the Life Sciences, Penn State University

Clafin background



The University

History: Founded in 1869 and named in honor of Lee Clafin, a prominent Methodist layman from Boston, and his son William Clafin, then governor of Massachusetts.

Location: Orangeburg, South Carolina
50 miles southeast of Columbia;
75 miles northwest of Charleston

Campus: 50-acre main campus

Colors: Orange & Maroon

Endowment: \$48.6 million

Affiliation: The United Methodist Church

Accreditation: Clafin University is accredited by the Southern Association of Colleges and Schools Commission on Colleges to award baccalaureate and masters degrees. Contact the Commission on Colleges at 1866 Southern Lane, Decatur, Georgia 30033-4097 or call 404-679-4500 for questions about the accreditation of Clafin University.

Carnegie Class: Baccalaureate Colleges
- Arts and Sciences



President: Dr. Dwaun J. Warmack

Claflin's Overview



CLAFLIN UNIVERSITY

ELEVATION & TRANSFORMATION



**U.S. News
& World Report**
BEST COLLEGES 2023 RANKINGS

**A TOP 10
NATIONALLY
RANKED HBCU**

Ranked among all HBCUs,
however, Claflin is the #1 HBCU
in South Carolina.

**#1 ANNUAL ALUMNI
GIVING PERCENTAGE
AMONG ALL HBCUS**

**A TOP PERFORMER
ON SOCIAL MOBILITY**

Institutions who advance
social mobility by enrolling and
graduating large proportions of
students awarded Pell Grants.



Claflin University Ranked #3 HBCU
**With Highest 4-Year Graduation Rate by
US News and World Report**

Academics

Undergraduate majors (UG): 38 Average class size: 16
Graduate majors (GR): 5 Instructional Faculty: 119
Online degrees: 9 (4 UG, 5 GR) full time; 82% with terminal degrees.
Student to Faculty Ratio: 13:1

Penn State's Interdisciplinary Institutes



\$1 billion in annual research expenditures
Approximately 20% of Penn State R&D expenditures are re-invested to support research.

Box A. Interdisciplinary Research Institutes

- Social Science Research Institute (SSRI)
- Huck Institutes of the Life Sciences (HUCK)
- Institutes of Energy and the Environment (IEE)
- Institute for Computational and Data Sciences (ICDS)
- Materials Research Institute (MRI)
- Clinical and Translational Science Institute (CTSI)
- Penn State Cancer Institute (PSCI)



Clafin University Chemistry & Biology

Newly funded (2023) \$17,417,000 state-of-the-art research facility

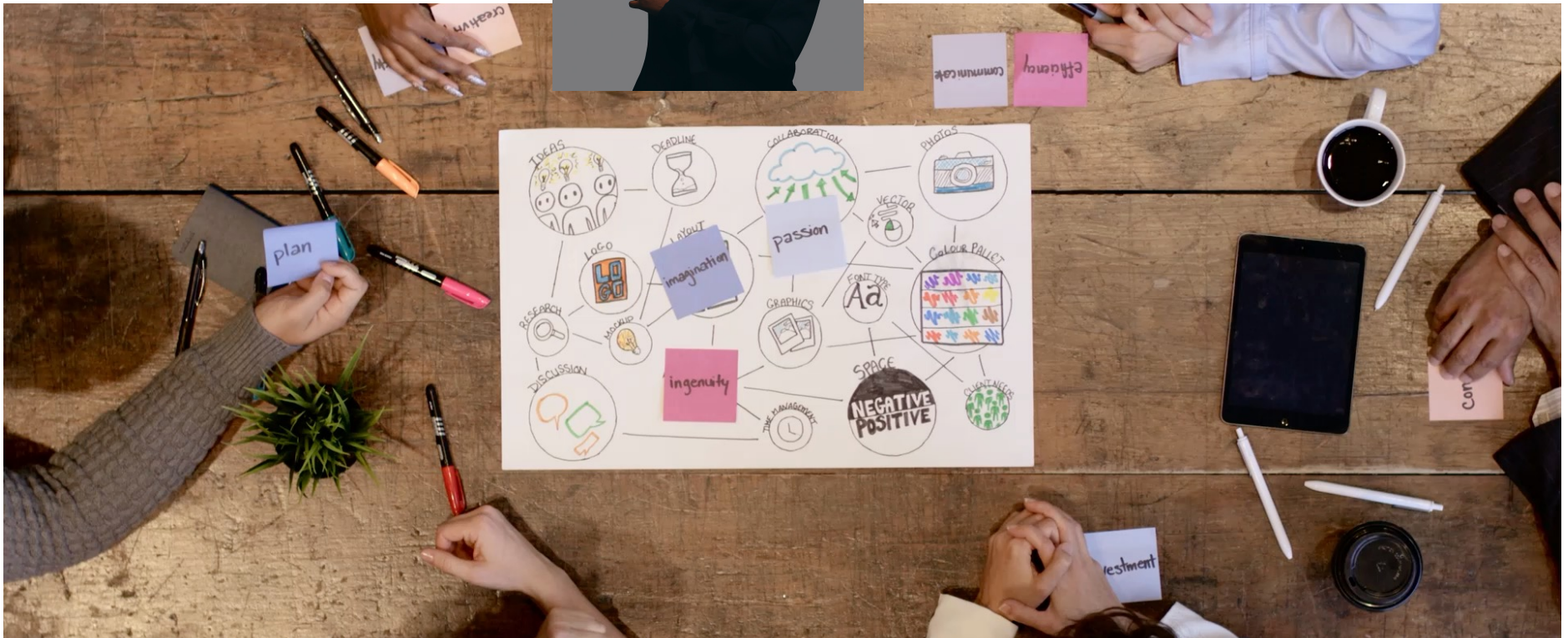
- 6 faculty in Chemistry
- 10 faculty in Biology
- 4/4 teaching load (3/3 Chemistry)
- Master of Science in Biotechnology
- Strengths in molecular sciences, biotechnology, microbiology, biosafety.



PSU-Huck Institutes of the Life Sciences

- 10 state-of-the-art Shared Technology Facilities with unique lab rotation system
- 110 co-hired faculty researchers
- 33 Centers/Institutes
- 6 Intercollege PhD programs and one Master in Biotechnology program- 250 PhD students advised by 330 faculty
- 6-8 fold ROI
- Impacting \$290M annual research portfolio
- Robust training grant program

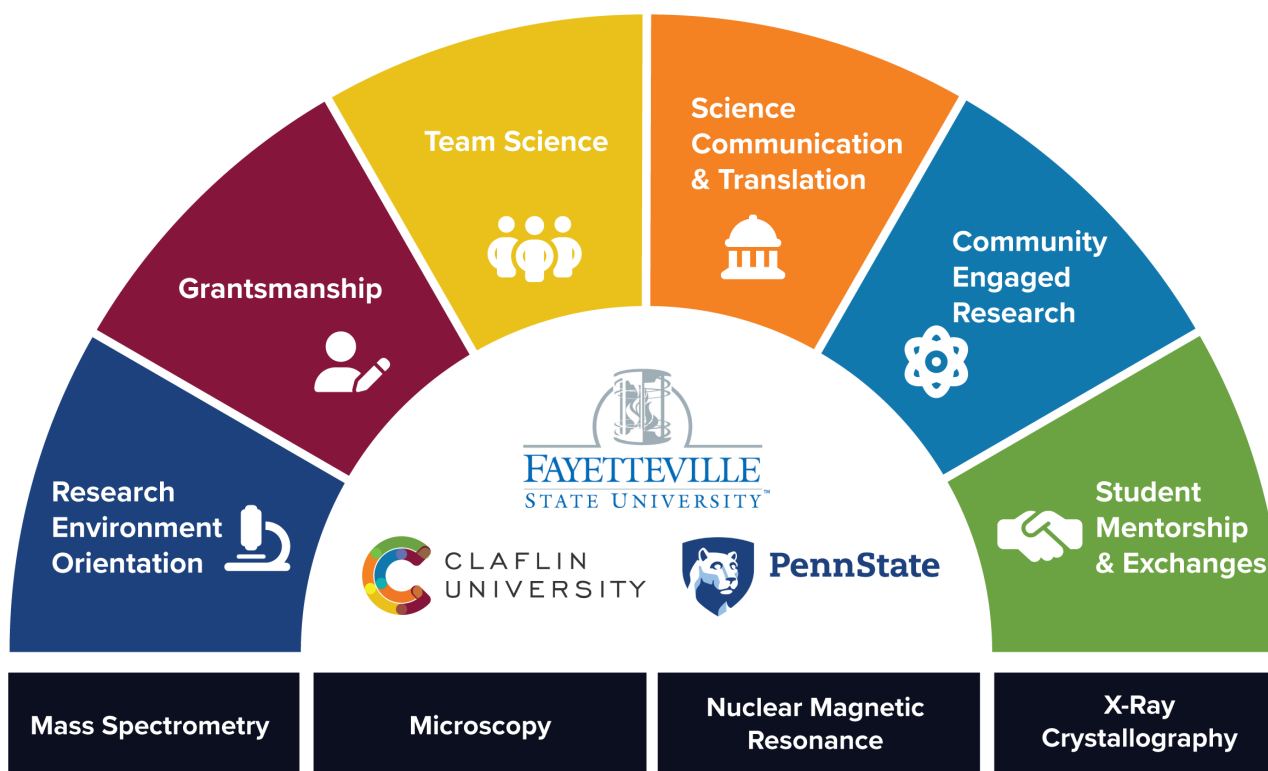
When is it due? Next week?



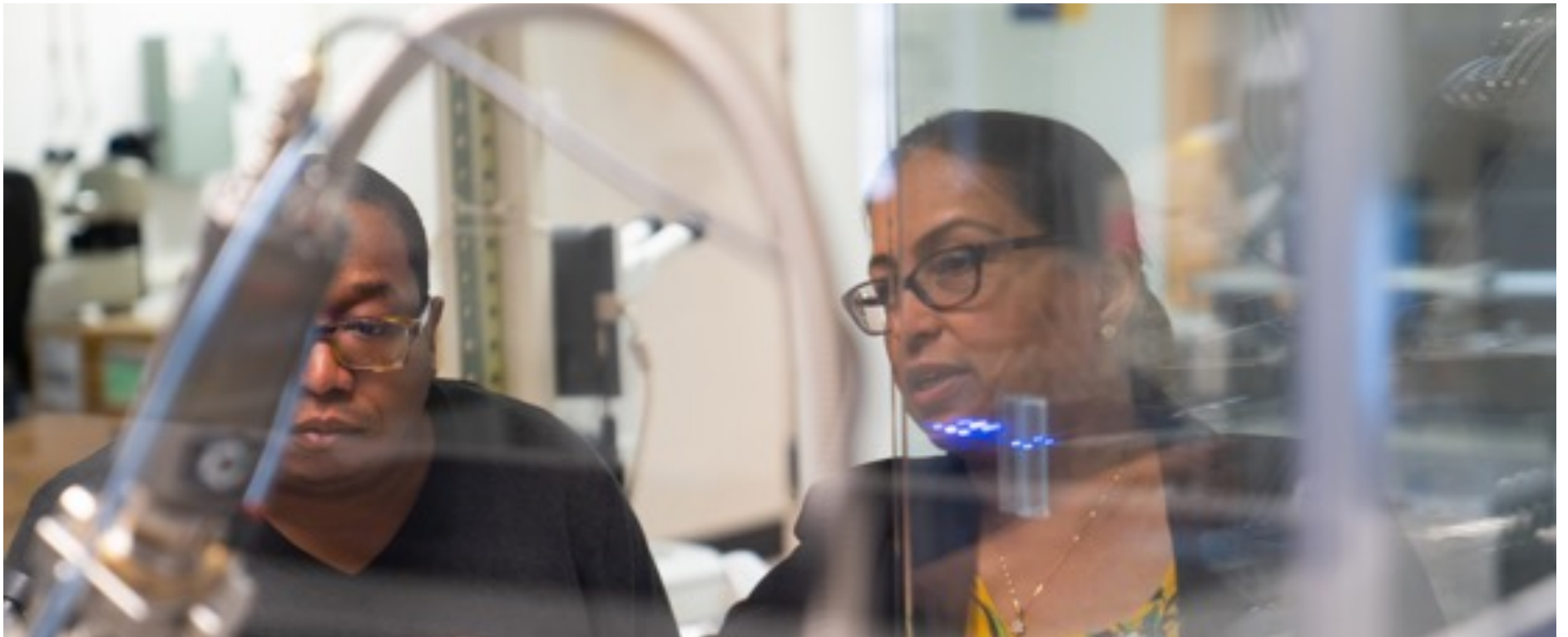
The SUSTAIN-ERIs Model



SUSTAIN - Emerging Research Institutions



Training



CU's Stephon Void with PSU's Neela Yennawar, X-ray Crystallography, October 13 & 14, 2022

Student visits



CU students visit STEM Open House, October 13-15, 2022



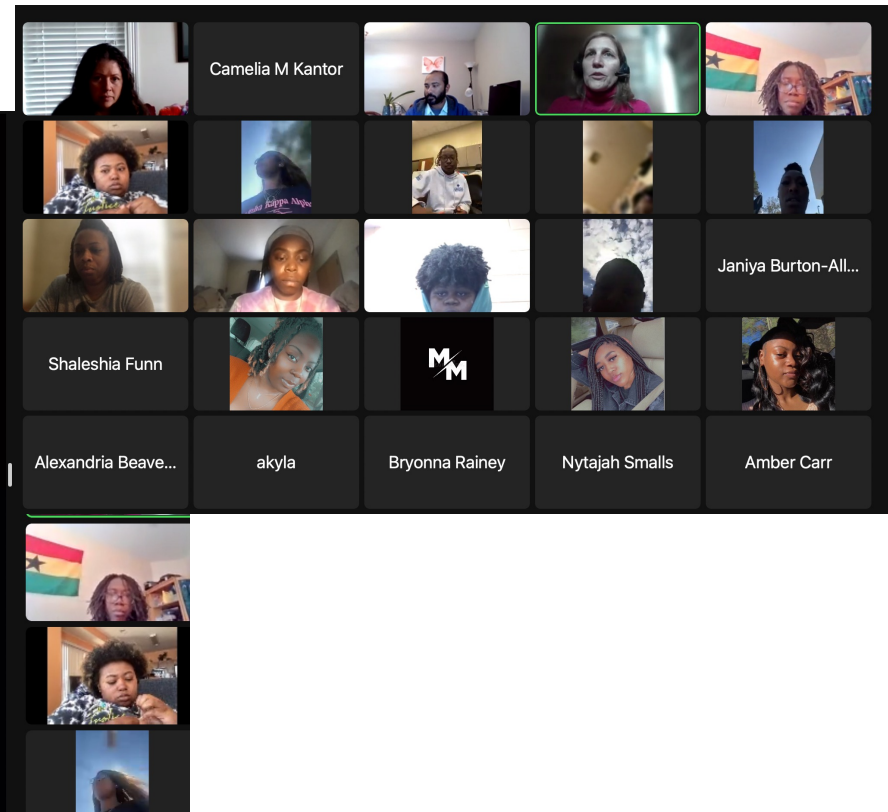
NCCU students visit, July 26, 2022

Seminar speaker series

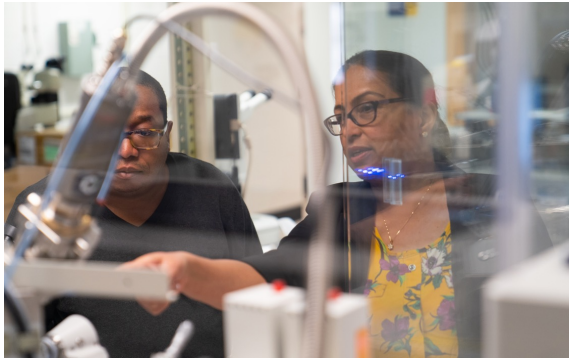


Graduate School Opportunities at
Penn State: Oh the Places You'll Go!
Claflin University, Oct 28, 2022

Donna H. Korzick, Ph.D. (dhk102@psu.edu)
Chair, Intercollege Program in Integrative and Biomedical Physiology
Director, Graduate Training Initiatives, Huck Institutes of the Life Sciences



PENN STATE INTER-INSTITUTIONAL PARTNERSHIPS FOR DIVERSIFYING RESEARCH (IPDR)



EXPANDING OUR PARTNERSHIPS WITH MINORITY SERVING INSTITUTIONS

Huck, in collaboration with the SSRI, MRI, IEE, ICDS, CTSI, and the Penn State Cancer Institute, is offering a new interdisciplinary seed grant program aimed at developing new or leveraging existent strategic partnerships and alliances with Minority Serving Institutions (MSIs).

Proposal submission deadline: **May 8th, 2023**

For more details:



 **PennState**
Huck Institutes of
the Life Sciences

 **PennState**
Materials Research
Institute

 **PennState**
Social Science
Research Institute

 **PennState**
Institute for Computational
and Data Sciences

 **PennState**
Institutes of Energy
and the Environment

 **PennState**
Clinical and Translational
Science Institute

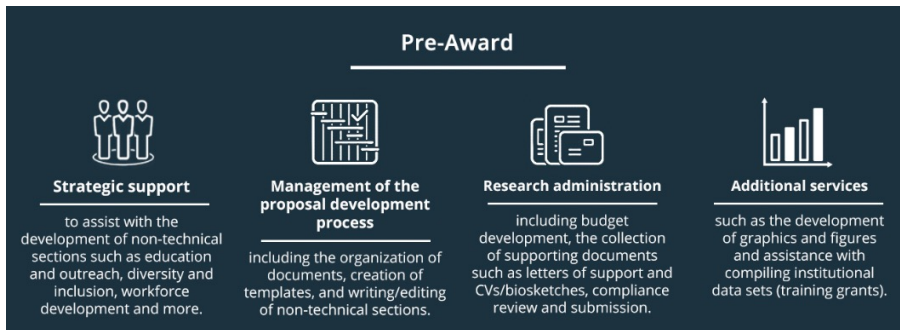
 **PennState**
Cancer Institute

Pre-award support



PSU Strategic Interdisciplinary Research Office (SIRO)

CU Sponsored Programs Office (SPO)



PRE-PROPOSAL CONSULTATIONS

After the Letter of Intent to Apply has been submitted to SPO, the assigned Sponsored Programs Administrator will reach out to schedule a pre-proposal consultation. The pre-proposal consultation is held to review the funding opportunity notice, develop a timeline for successful submission of the application, review the budget requirements and create a checklist of items needed for the proposal.

- Check list and create detailed timeline
- Templates for non-technical sections
- Design services (figures)
- Co-writing non-technical sections
- Editing proposal
- Budget support- write budget justification
- PI/Co-PI documents – collection and corrections
- Compliance and submission

- Check list and provide final deadline
- NA
- NA
- NA
- NA
- Budget support - check for accuracy
- PI/Co-PI final documents
- Compliance and submission

BUSINESS- Ensuring knowledge, growth and financial sustainability



- Provide business acumen in support of grant budgeting and management.
- Leverage new and existing sources of growth including through:
 - business partnerships
 - Materials Agreements (MTAs)
 - fee-for-service
 - licensing
 - collaboration agreements
 - avenues tied to faculty start-ups and spin-outs.

Recent/ongoing joint projects

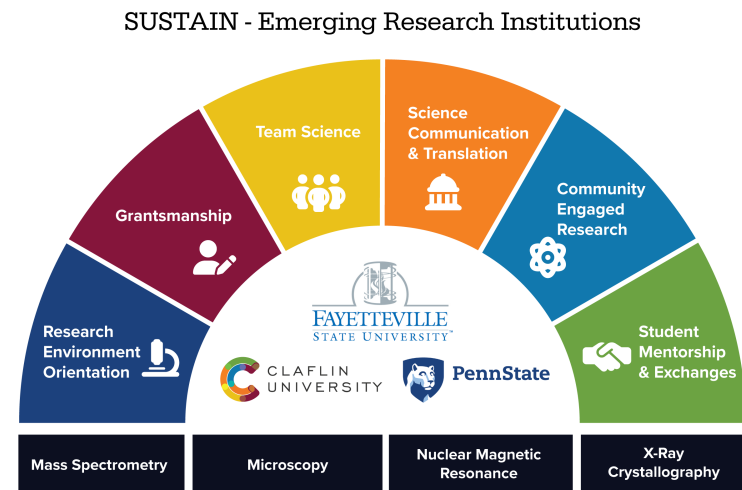


- NSF HBCU-EiR Planning Grant proposal, *Planning Grant for Excellence in Research: Rapid Detections and Surveillance of Biological Agents in Sewage Specimens*, (Due May 8)
- Fayetteville State University's NASA MUREP Precollege Summer Institute: *Cutting-edge Technologies for Examining Climate Change* (FSU-CTECC). Awarded (5 years)
- NIH Program Evaluation Capacity: NOT-GM-22-013 *Enhancing Claflin University Biomedical and Behavioral Sciences Training Program Evaluation Capacity* (Pending)
- NSF GRANTED *Developing Long-Term, Sustainable Life Sciences Research Capacity at Emerging Research Institutions (SUSTAIN-ERIs)* , Penn State and Claflin University (Pending)
- Sloan Foundation, Claflin University, Penn State and Fayetteville State University, *Generation Z exchanges to negotiate power and relevance of co- cultural research environments at HBCUs and PWIs* (not funded)

BIG TAKEAWAYS



- Matching done in research areas of common interest and strength
- Focus on technical capabilities and training exchanges
- Test the waters- pilot (feasibility on all levels)
- Transfer of business (commercial) and grantsmanship know-how
- Commit funding
- Build parallel and joint capacity



Thank you!



Contact:

Dr. Nicholas J. Hill, nhill@claflin.edu

Dr. Camelia M. Kantor, ckantor@psu.edu