



UIDP HBCU Engage 2023

Crystal Canja, HBCU/MSI Program Manager
Partnership Development Office
Center for Innovation & Strategic Partnerships
crystal.canja@nih.gov

FNLCR Overview

Mission

The Frederick National Laboratory for Cancer Research (FNLCR) leads through discovery and innovation in basic and applied biomedical sciences to bring hope to people worldwide in their fight against cancer, HIV-AIDS and other infectious diseases

About Us

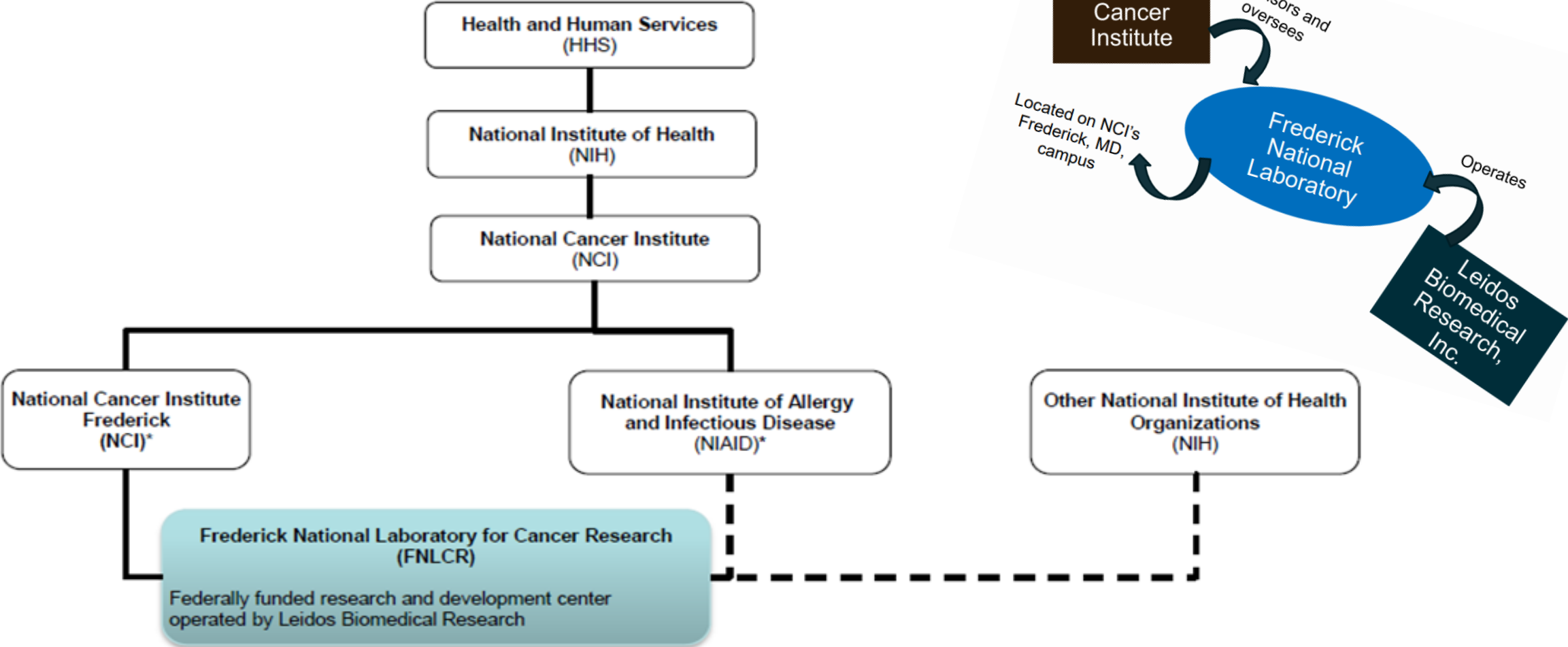
- Gained National Laboratory status in 2012
- 2800+ employees
- Only National Lab dedicated to Biomedical Research
- Only National Lab under the NIH
- 64 Acres on Ft. Detrick & Advanced Technology Research Facility
- Largest HHS Contract (\$6.6B, 6 Years)

Capabilities

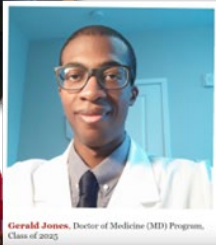
- Conduct basic, translational, preclinical, and applied Research & Development (R&D)
- Support basic and applied research investigators at universities and institutions across USA
- Provide dedicated support to customer/government-sponsored initiatives
- Participate in domestic and international clinical trials



Government-Owned, Contractor-Operated (GOCO)



2022-2023 FNLCR HBCU Activities



◇ Student/Faculty Training Opportunities:

- **Morehouse School of Medicine (MSM)** – Summer Trainees, HPC Environment
- **Howard University (HU)** – Nanotechnology Characterization Laboratory, Postdocs
- **Fisk University/Morgan State University** – National Cryo-EM Facility

◇ Biomedical Program Development:

- **University of the Virgin Islands (UVI)**

◇ Community Outreach:

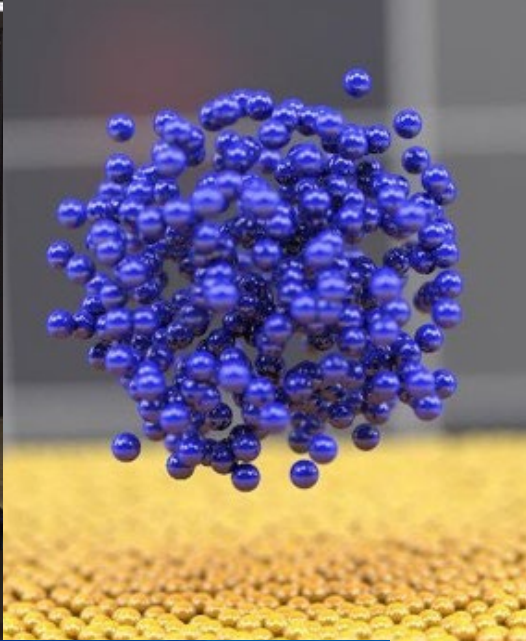
- **Tougaloo College** – Faith-based prostate cancer education seminar series
- **Bowie State University (BSU)** – Arundel Outreach (Zimbabwe), STEM Pipeline Development

◇ Federal Laboratory Education Accelerator (FLEX) Program Participation:

- **Stillman College**
- **Bowie State University** – STEM Pipeline Development for high school students

The FNLCR will be co-organizing the first US-based Black in Cancer Conference in February 2024 in partnership with Black in Cancer (BIC), Cancer Research UK, the National Cancer Institute, and the American Cancer Society.





**Terrence Buck, Talent
Acquisition Manager**



Idaho National Laboratory

UIDP
April 2023

INL is managed by Battelle Energy Alliance
for the US Department of Energy



DOE National Laboratories





Addressing the world's most pressing challenges through research, development, and demonstration



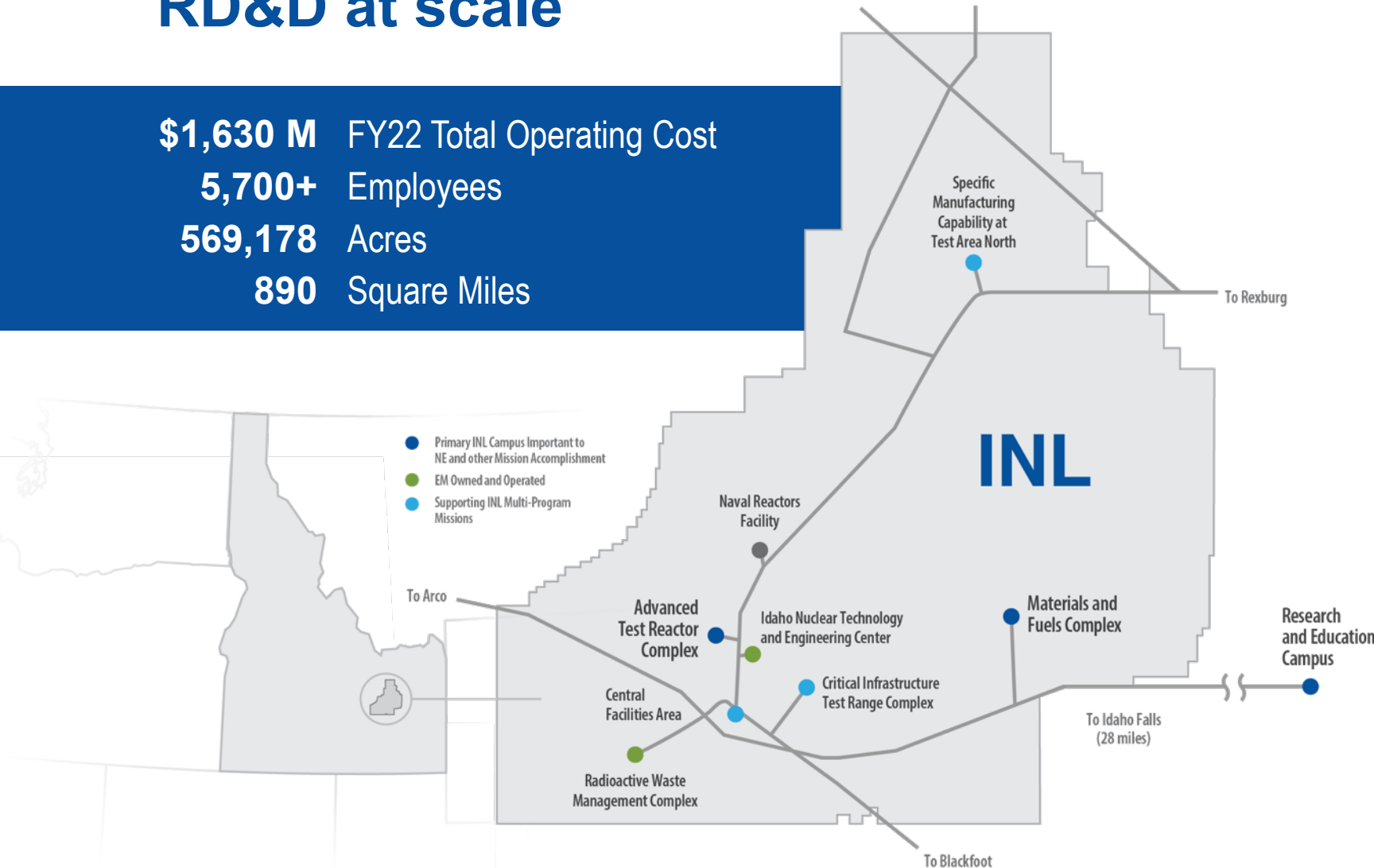
VISION
INL will change the world's energy future and secure our critical infrastructure.

MISSION
Discover, demonstrate and secure innovative nuclear energy solutions, clean energy options and critical infrastructure.

VALUES
Excellence, Inclusivity, Integrity, Ownership, Teamwork, Safety.

Unique INL site, infrastructure, and facilities enable energy and security RD&D at scale

\$1,630 M FY22 Total Operating Cost
5,700+ Employees
569,178 Acres
890 Square Miles



4 Operating reactors

22 Hazard Category II & III non-reactor facilities/ activities

49 Radiological facilities/activities

17.5 Miles railroad for shipping nuclear fuel

44 Miles primary roads (125 miles total)

9 Substations with interfaces to two power providers

128 Miles high-voltage transmission & distribution lines

3 Fire Stations



Creating a secure, resilient, clean energy future



Nuclear Science & Technology

Advanced Test Reactor Complex



Materials and Fuels Complex

Energy & Environment Science & Technology



National & Homeland Security Science & Technology

