

UIDP WEBINAR

Xurban Webinar Series Session 3: Enabling Innovation and Entrepreneurship in Xurban Areas

September 21, 2023 | 1 - 2 p.m. ET



Dan Culhane
Ames Chamber of
Commerce



Alison Doyle
Iowa State University
Research Park



Dominic Endicott
Northstar Ventures



James Reecy
Iowa State
University



Rick Sanders
Iowa State University
Research Park

How to Participate

Webinar Logistics

Tech Support

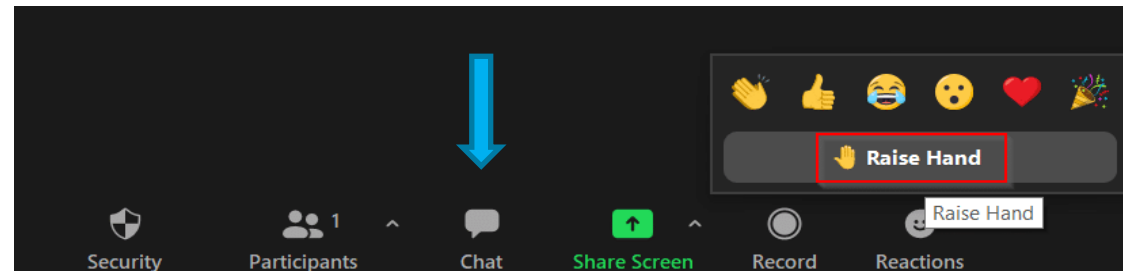
- If you experience audio/video issues, you can try leaving and rejoining the webinar.

[Webinar ID: 829 3606 1191](#)

You may also use the chat to contact UIDP Staff and someone will assist you.

Chat and Resources

- Please submit your questions using the Chat or Q&A box on your screen. You may submit questions at any time during the webinar.
- A recording will be emailed to all registrants within a week after the webinar is over.



Strengthening
University-Industry
Partnerships



Strengthening
University-Industry
Partnerships

Disclaimer

UIDP materials, which include publications, webinars, videos, and presentations, reflect an amalgamation of the experiences and knowledge of those who participate in UIDP activities. The views and opinions expressed in UIDP materials do not necessarily reflect the official policy or position of any individual organization or the UIDP. At no time should any UIDP materials be used as a replacement for an individual organization's policy, procedures, or legal counsel. UIDP is not a lobbying organization and UIDP materials are not intended to be used to influence government decisions.

Collaboration is Key



Working with our partners...

- Programs to support industry and ability to help with packaging both City and State incentives
- Local Industrial Tax Abatement
- Job training programming
- State programs



And Many
More...



Economic Development

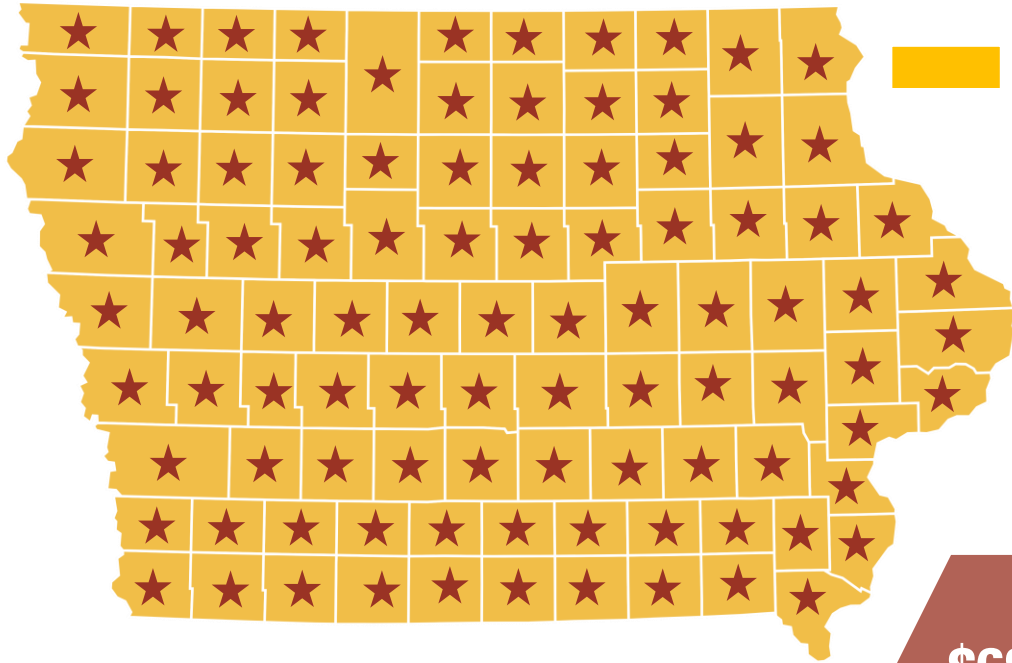
- Economic development assets – Prairie View Industrial Center, Iowa State University Research Park, business parks in Boone, Story City, Huxley and Nevada
- As a region, we must always be preparing our communities for the next job creator
- This means hard infrastructure, but also community amenities that attract people... which will segue to the next slides.



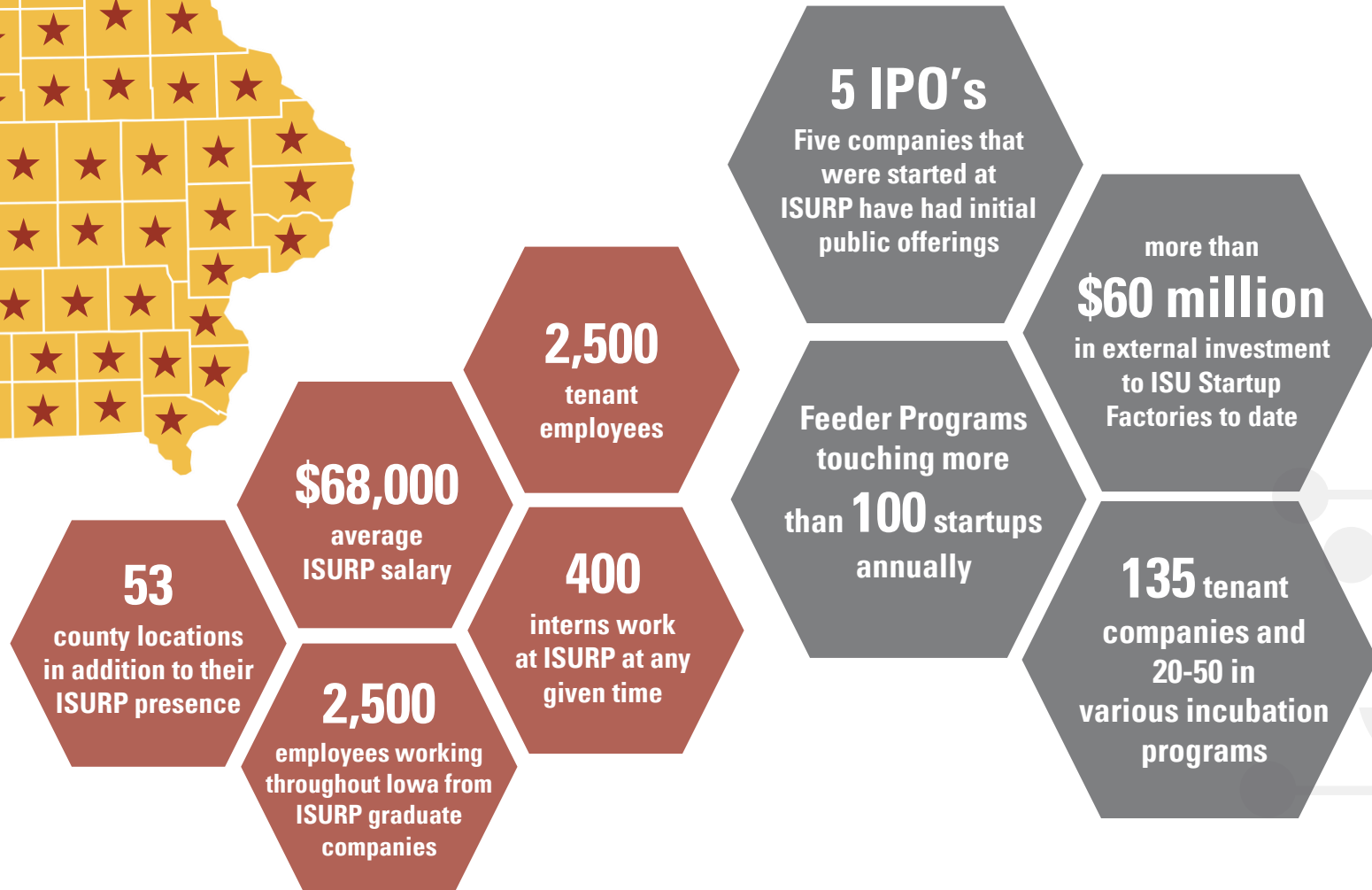
ISU Research Park: a History of Statewide Impact



IOWA STATE UNIVERSITY
ResearchPARK



 = All 99 County Research Impact





CYTOWN



IOWA STATE
UNIVERSITY™




IOWA STATE UNIVERSITY
ResearchPARK

 CUSHMAN &
WAKEFIELD

VISION

GOALS & STRENGTHS

1. **Generate new revenues**
2. **Attract and retain students, workers, businesses and visitors**
3. **Reinvest in the Iowa State Center and Hilton Coliseum**
4. **Build convention & hotel space**
5. **Destination: Live, Work, and Play**

- ISU as an **anchor**
- ISU Research Park as a **catalyst**
- ISU Athletics and Iowa State Center as a **driver**



AREA EVENT FACILITIES

SURROUNDING AREA



1
IOWA STATE UNIVERSITY
CAMPUS



2
CAMPUSTOWN



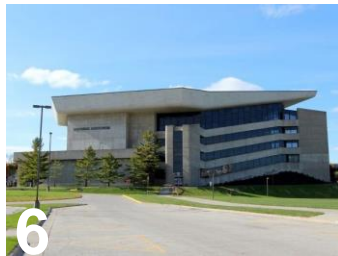
3
FISHER THEATER
CAPACITY: 450



4
SCHEMAN BUILDING



5
HILTON COLISEUM
CAPACITY: 14,356



6
STEPHENS AUDITORIUM
CAPACITY: 2,700



7
ISU ALUMNI CENTER



8
STARK PERFORMANCE
CENTER



9
JACK TRICE STADIUM
CAPACITY: 61,500



10
REIMAN GARDENS



11
ISU COLLEGE OF
VETERINARY MEDICINE



12
ISU RESEARCH PARK



Q&A

Please submit your questions using the Q&A or Chat tab on your screen.



Strengthening
University-Industry
Partnerships



THANK YOU!

James Reecy

Associate Vice President for Research,
Iowa State University

jreecy@iastate.edu

Alison Doyle

Associate Director, Iowa State
University Research Park

adoyle@iastate.edu

Rick Sanders

President, Iowa State University Research
Park

rsanders@iastate.edu

Dan Culhane

President and CEO, Ames Chamber of
Commerce

dan@ameschamber.com

Dominic Endicott

Author and Director, Northstar
Ventures

dominic.endicott@gmail.com



Strengthening
University-Industry
Partnerships





Xurban

West Virginia University 2024

June 11-12, 2024
Morgantown, WV



Strengthening
University-Industry
Partnerships





UIDP Irvine

October 3-5, 2023

University of California, Irvine



Strengthening
University-Industry
Partnerships

A nighttime photograph of a cityscape with mountains in the background. In the foreground, a large, illuminated stadium structure with a white, tent-like roof is visible. The sky is dark with some clouds, and the city lights are glowing. A large, stylized graphic element consisting of overlapping blue and green curved shapes is on the left side of the image.

UIDP

CONTRACTING FORUM

January 24-25, 2024

Register:

<https://bit.ly/UIDPContracting2024>

THANK YOU!

Please check your email and complete the survey so UIDP can better meet your needs.



You may also scan this QR code using your mobile device to be directed to the survey.