



How to Develop the Bioeconomy: Regional and International Perspectives

Dr Laura AS Ciccolini

The bioeconomy represents the economic potential of harnessing the power of bioscience, using renewable biological resources to replace fossil resources in innovative products, processes and services.

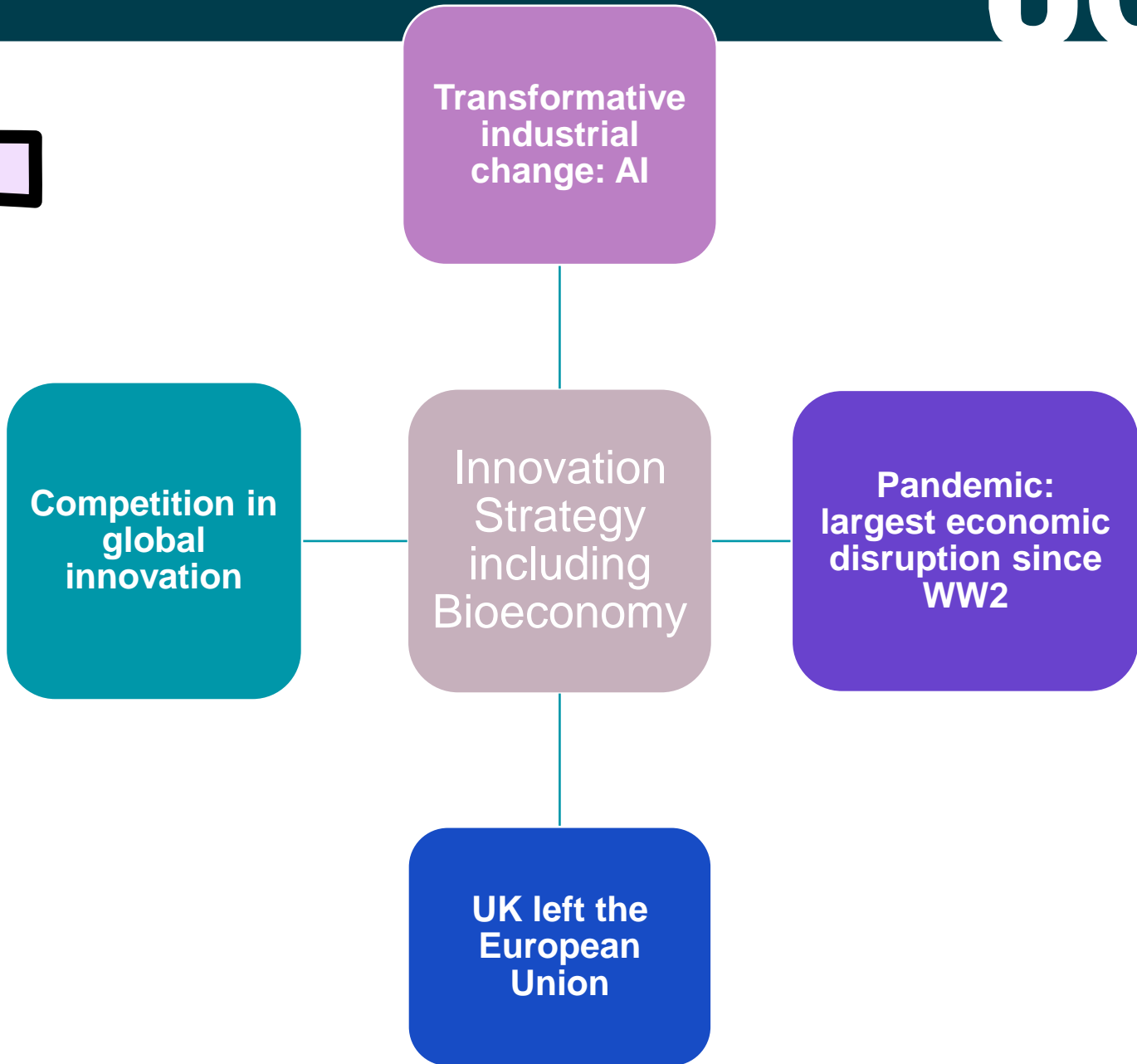
The bioeconomy integral part of UK Government Innovation Strategy

SUSTAINABLE DEVELOPMENT GOALS



WHY INNOVATION STRATEGY?

Innovation at centre of everything the nation does



INNOVATION KEY LESSONS

Prioritise innovation

Portfolio bets

Public sector procurement

Embrace empowered teams

Pursue speed

Public-private partnerships

International innovation

Discovery and engineering

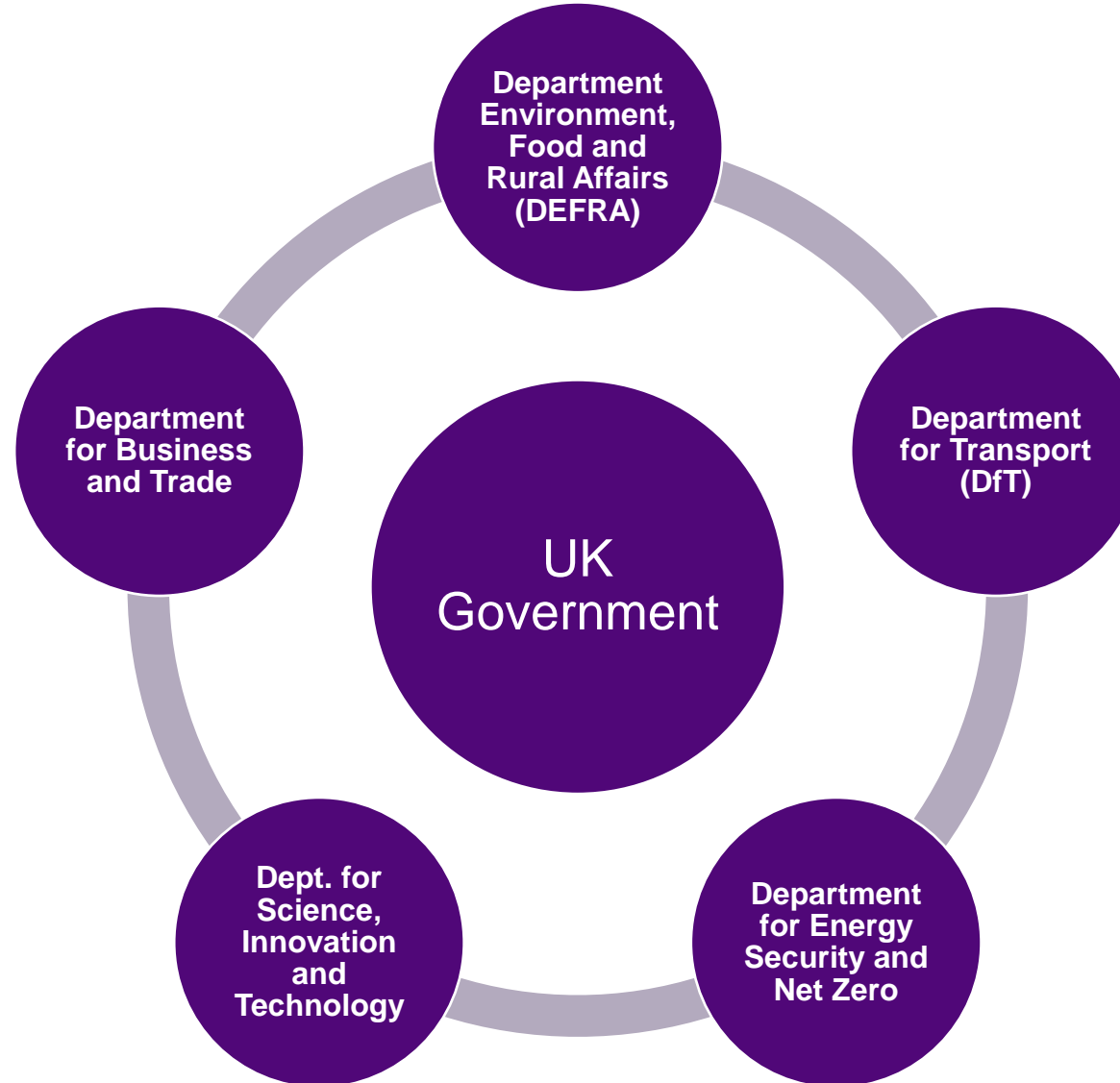
Build and design

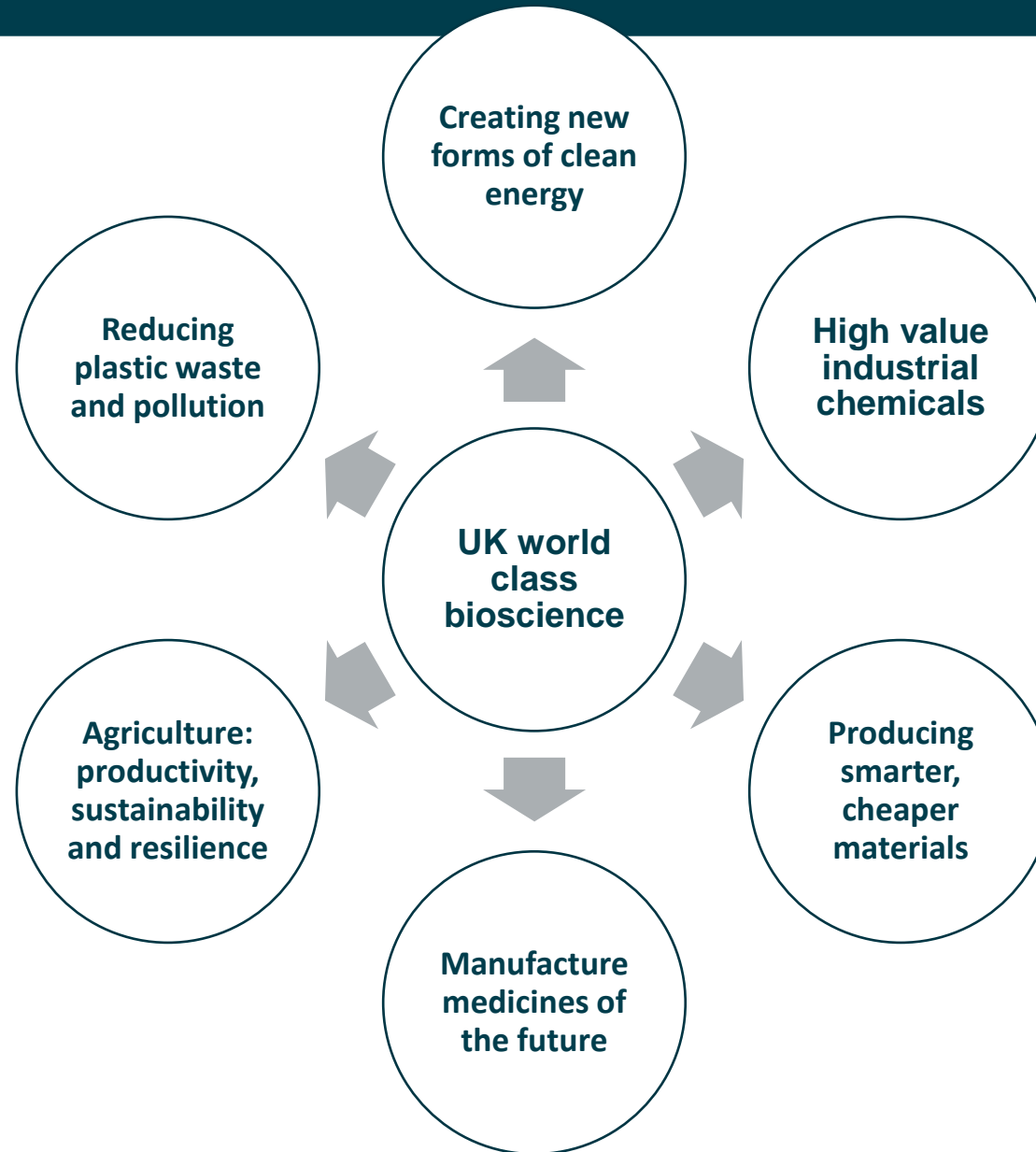
Value non-monetized benefits

4 key actions,
determined in 2021.

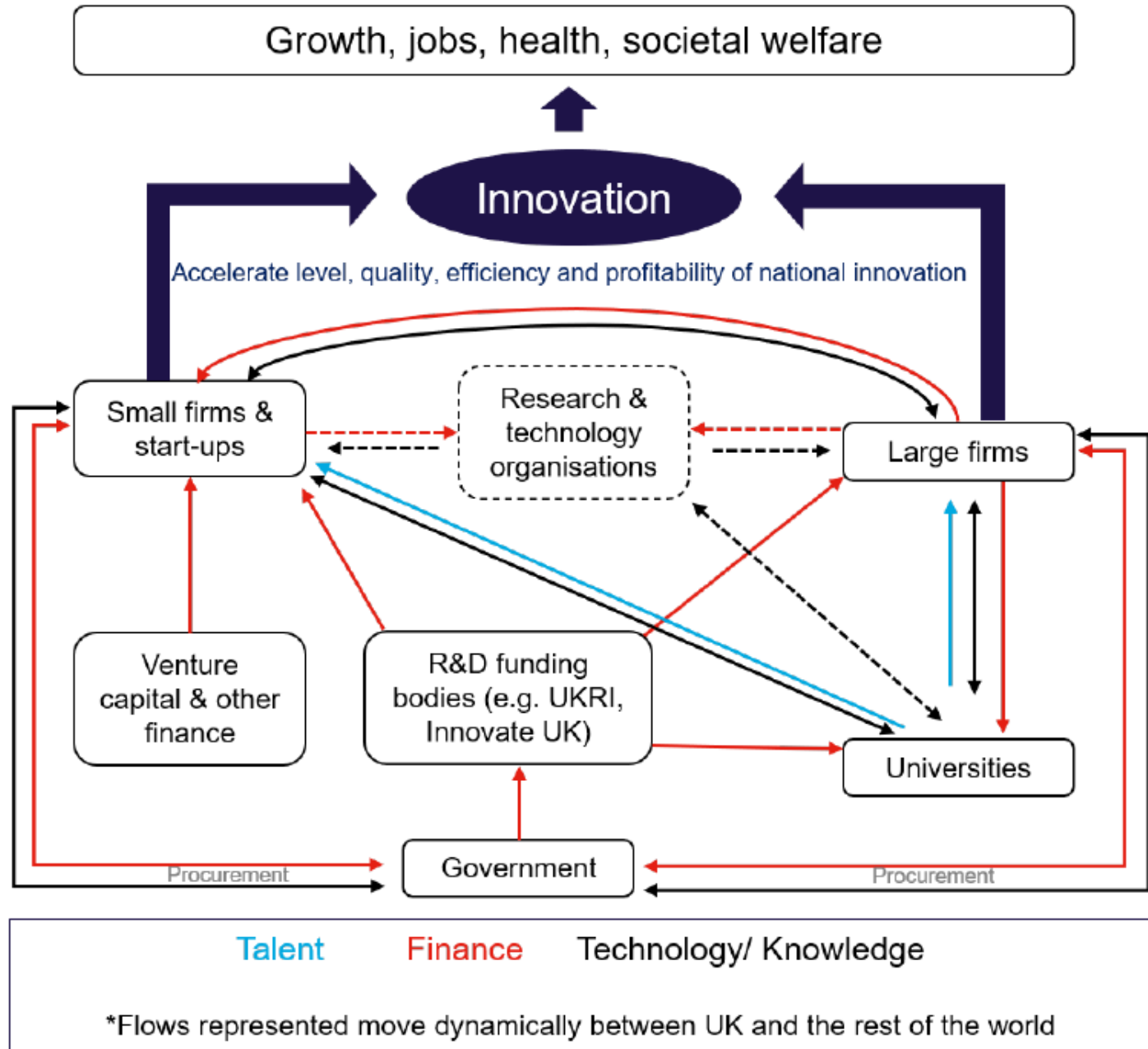
- National**
 - 2021 strategy applies to all UK
- Devolved administrations**
 - Work done at regional level NI, Scotland, Wales
 - Own administrative powers
- Other Key Strategies**
 - Net zero Strategy
 - Digital Strategy
 - National Cyber Strategy
 - National Space Strategy







INNOVATION ECOSYSTEM AND BIOECONOMY



BIOECONOMY: A SUSTAINABLE ECONOMY FOR SOCIETAL BENEFIT

SOME KEY FUNDING SOURCES

UK Research and Innovation

Research England

Higher Education Innovation Fund (HEIF)

Strengthen engagement

Support broad range of knowledge exchange projects.

Research Councils

Impact Acceleration Accounts (IAAs)

Boost the economic and social impact of HEIs research

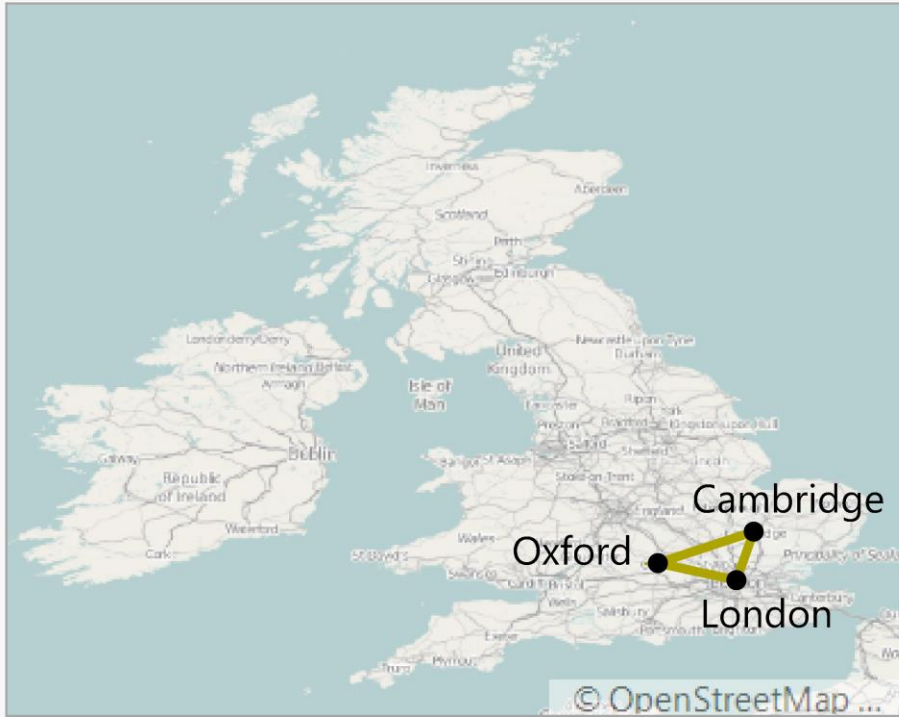
AHRC, BBSRC, ESRC, EPSRC and STFC portfolios. (MRC, NERC)

Innovate UK

KTPs and Innovation Funding

Support business-led

Connect with experts, specialist support and facilities



**FROM NATIONAL TO LOCAL,
FOR GLOBAL IMPACT**

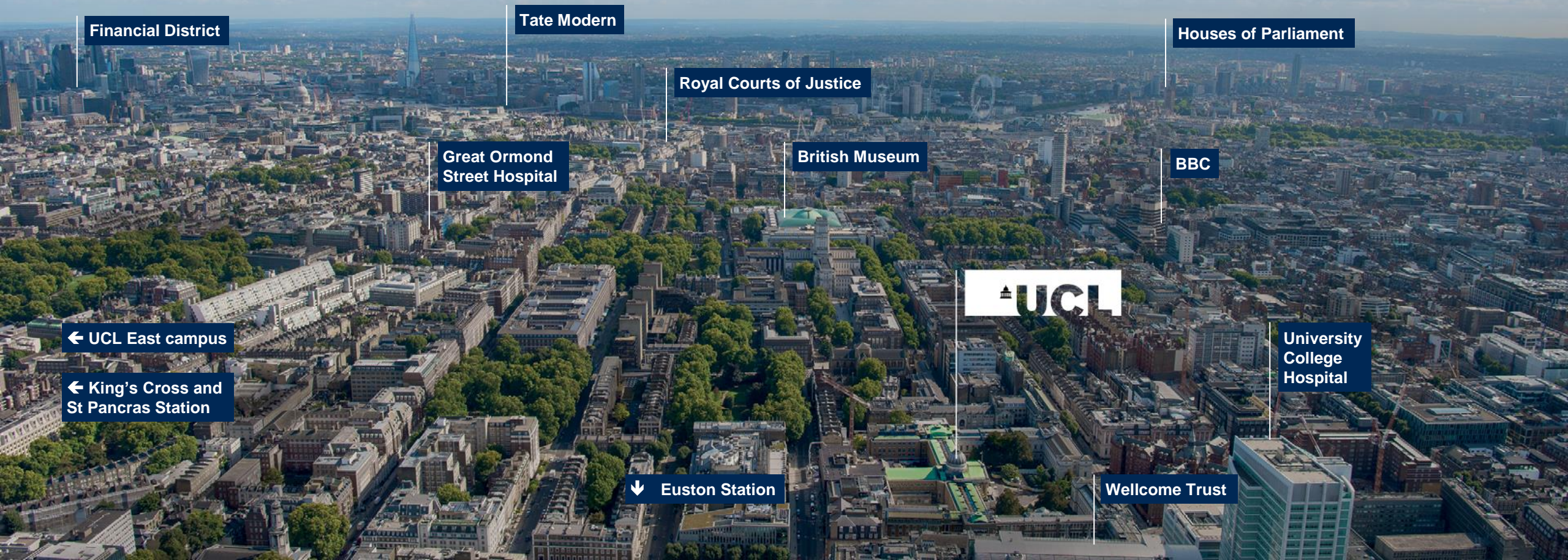
Bioeconomy UK

**Bioeconomy
Golden Triangle**

**UCL unique
selling points**

**Expertise
impacting
bioeconomy as
societal goal**

Our community sits at the heart of one of the world's most dynamic cities.



Financial District

Tate Modern

Houses of Parliament

Royal Courts of Justice

Great Ormond Street Hospital

British Museum

BBC



University College Hospital

← UCL East campus

← King's Cross and St Pancras Station

↓ Euston Station

Wellcome Trust

Our new UCL East campus in London's culture and innovation quarter

UCL Bloomsbury →
Campus



Stratford Station

Westfield Stratford City

Stratford International Station

Lee Valley VeloPark

London Aquatics Center

UCL

UCL East Campus

BBC

Sadler's Wells

UAL London College of Fashion

V&A East

Queen Elizabeth Olympic Park

The O2

ArcelorMittal Orbit

Canary Wharf

Copper Box Arena

UCL

UCL at Here East

New UCL East campus in London's culture, innovation and learning quarter

- **Cutting-edge facilities, cross-disciplinary research**
- **New degrees, exploring robotics, ecology, technology, urbanism and health**
- **9 UCL faculties working together: help solve the biggest issues facing people and the planet**
- **World-class academic hub, alongside student accommodation**
- **Collaboration with industry and communities: make local and global impact**
- **Publicly accessible spaces for exhibitions, engagement and the arts**





THANK YOU



CONTACT DETAILS:

DR Laura AS Ciccolini

Email: l.ciccolini@ucl.ac.uk

Phone: +44(0)7564 580771

2018 Bioeconomy strategy; withdrawn-superseded by Innovation Strategy. Key elements part of renamed and shaped strategies

https://assets.publishing.service.gov.uk/government/uploads/system/uploads/attachment_data/file/1037343/181205_BEIS_Growing_the_Bioeconomy__Web_SP_.pdf

2021 UK Innovation Strategy: leading the future by creating it

https://assets.publishing.service.gov.uk/government/uploads/system/uploads/attachment_data/file/1009577/uk-innovation-strategy.pdf

University College London UCL

<https://www.ucl.ac.uk/>

<https://www.ucl.ac.uk/ucl-east/>

<https://www.un.org/en/academic-impact/page/sustainable-development-goals>

<https://www.globalgoals.org/goals/>