

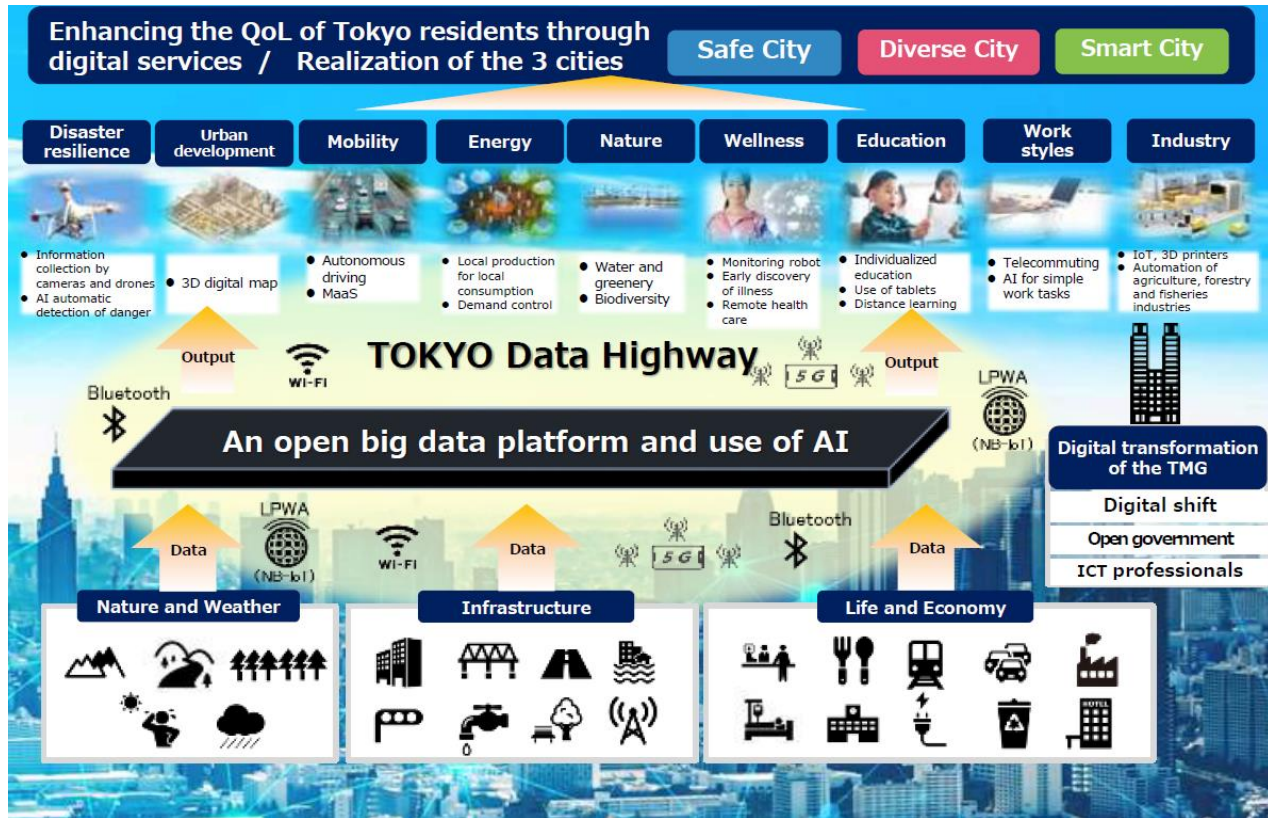


Hello, Smart Tokyo.

Making Tokyo smarter
and more enjoyable.

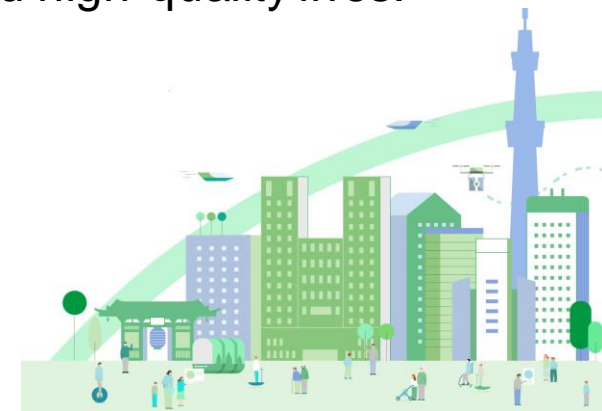
10 October 2023
UIDP Tokyo Forum
Mariko Negishi
Deputy Director of Smart City Strategy
Bureau of Digital Services

Overall image of Smart Tokyo



Tokyo is facing a historic turning point in various aspects such as climate change, energy, economy, and its population structure. We are confident that by utilizing digital technology, we can overcome these challenges and make Tokyo more convenient, enjoyable, and beautiful.

We, the Tokyo Metropolitan Government, are working towards creating "Smart Tokyo," where the potential of Tokyo is harnessed through digitization, enabling residents to lead high-quality lives.



Three Pillars to achieve Smart Tokyo

1

**Tokyo connected by a data highway
(TOKYO Data Highway)**

We have three Pillars to achieve Smart Tokyo.

Firstly, we will develop the Tokyo Data Highway, a high-speed Wi-Fi network that connects anyone, anywhere, anytime especially in times of emergency.

2

**Digital shift in public facilities
and resident services
(Digital transformation of the city)**

Then, using Tokyo Data Highway, we will create a system for convenient data integration. Using that data, we will promote innovative services that tackle both economic development and social issues.

3

**Digital shift in the government
(Digital transformation of the government)**

Lastly, we will promote digitization in Tokyo's government and its municipalities in order to continuously improve the quality of government services.

Leading areas for Smart Tokyo

In accordance with the Second Pillar, we will first develop studies with communities in five different areas. We aim to develop personalized services unique to each area, and then expand this initiative to other areas of Tokyo using the same method.



Case of Nishi-Shinjuku as one of leading areas



One of our cases in our leading areas is the Nishi-Shinjuku project.

As part of the redevelopment around Shinjuku Station, Nishi-Shinjuku, known for being a major business district and home to the Tokyo Metropolitan Government Building, will be transformed into a human-centered, walkable urban space.

In Nishi-Shinjuku, company leaders, government officials and academia researchers are working together to implement innovative services for urban development.

For that, we will innovate Nishi-Shinjuku through digitization in three main Strategies.



Strategy1: Nishi-Shinjuku Smart City Council

Nishi-Shinjuku Smart City Council

Smart Service Implementation Committee

Public Relations/ Community Committee

Data Utilization Subcommittee

The operating secretariat
(TMG/ Area Management Organization)

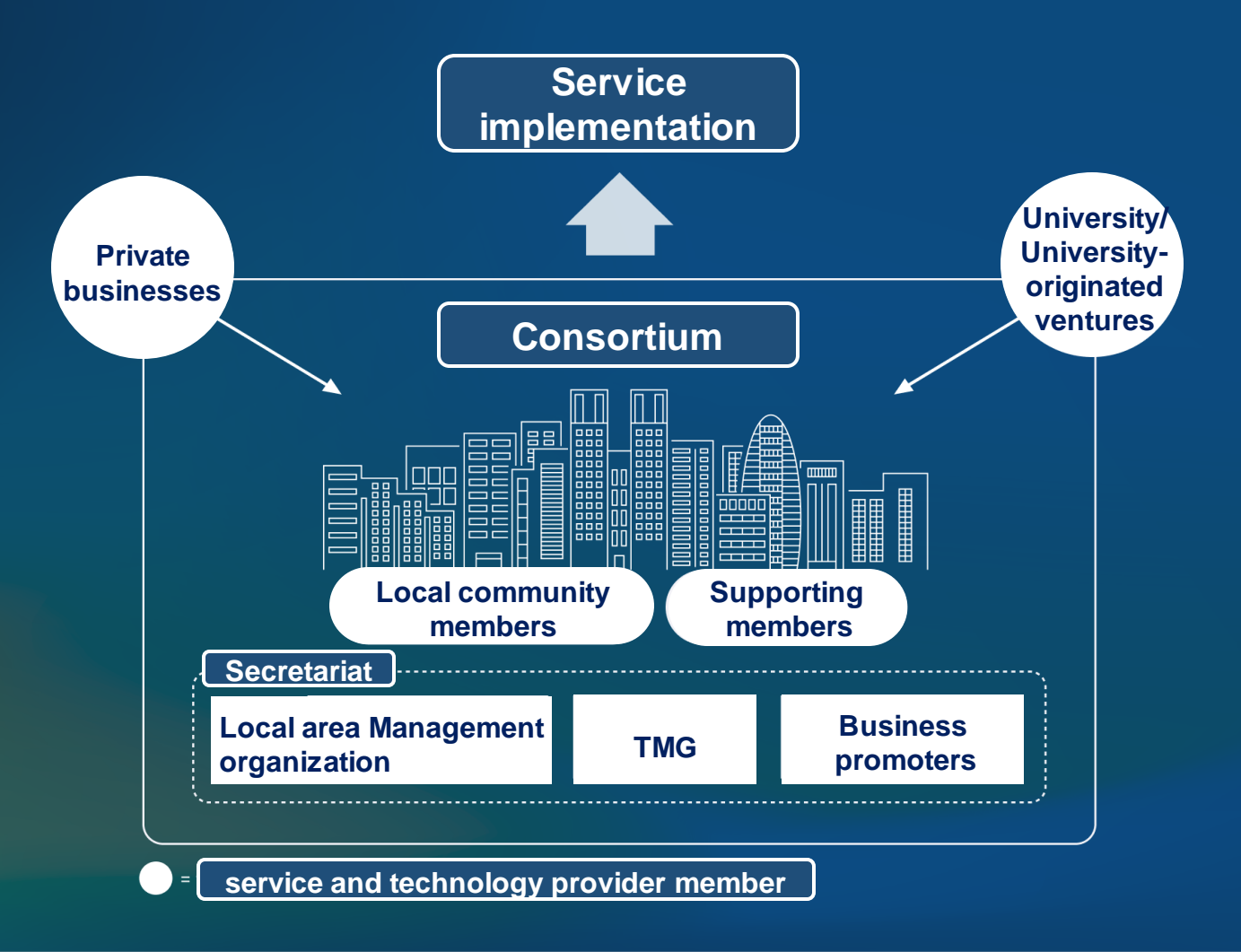
We are implementing services using innovative technology in Nishi-Shinjuku. We aim to expand the achievements of this initiative to other wards and municipalities within Tokyo.

In order to innovate Nishi-Shinjuku, we, the Tokyo Metropolitan Government, has established a council in collaboration with local organizations and telecommunications companies.

The purpose of this council is to understand the challenges in this area and then use digital technology to solve them, ultimately improving the quality of life for those involved in Nishi-Shinjuku.

The council has set three key domains of focus: "steady implementation of smart services," "enhancement of community-led initiatives," and "utilization of various urban data in the area." Under the council, separate subcommittees have been established for each of these domains, and discussions are being held with experts.

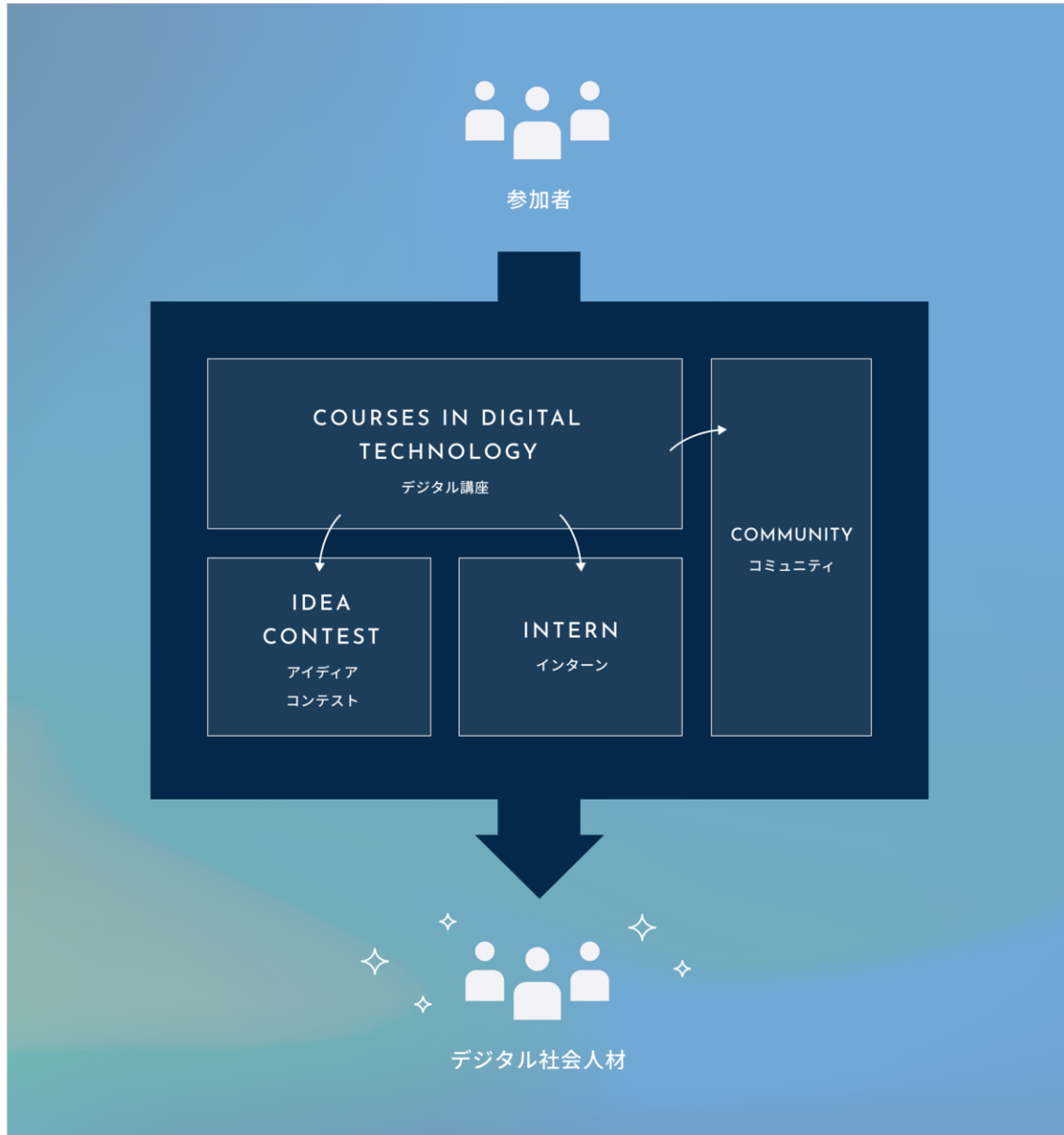
Strategy 2: Consortium for smart services implementation



The consortium is working on implementing smart services using innovative technology in Nishi-Shinjuku, while collaborating with various entities such as private companies and universities.

The secretariat, including the Tokyo Metropolitan Government, provides various support for companies and universities aiming to provide advanced technology and services in Nishi-Shinjuku.

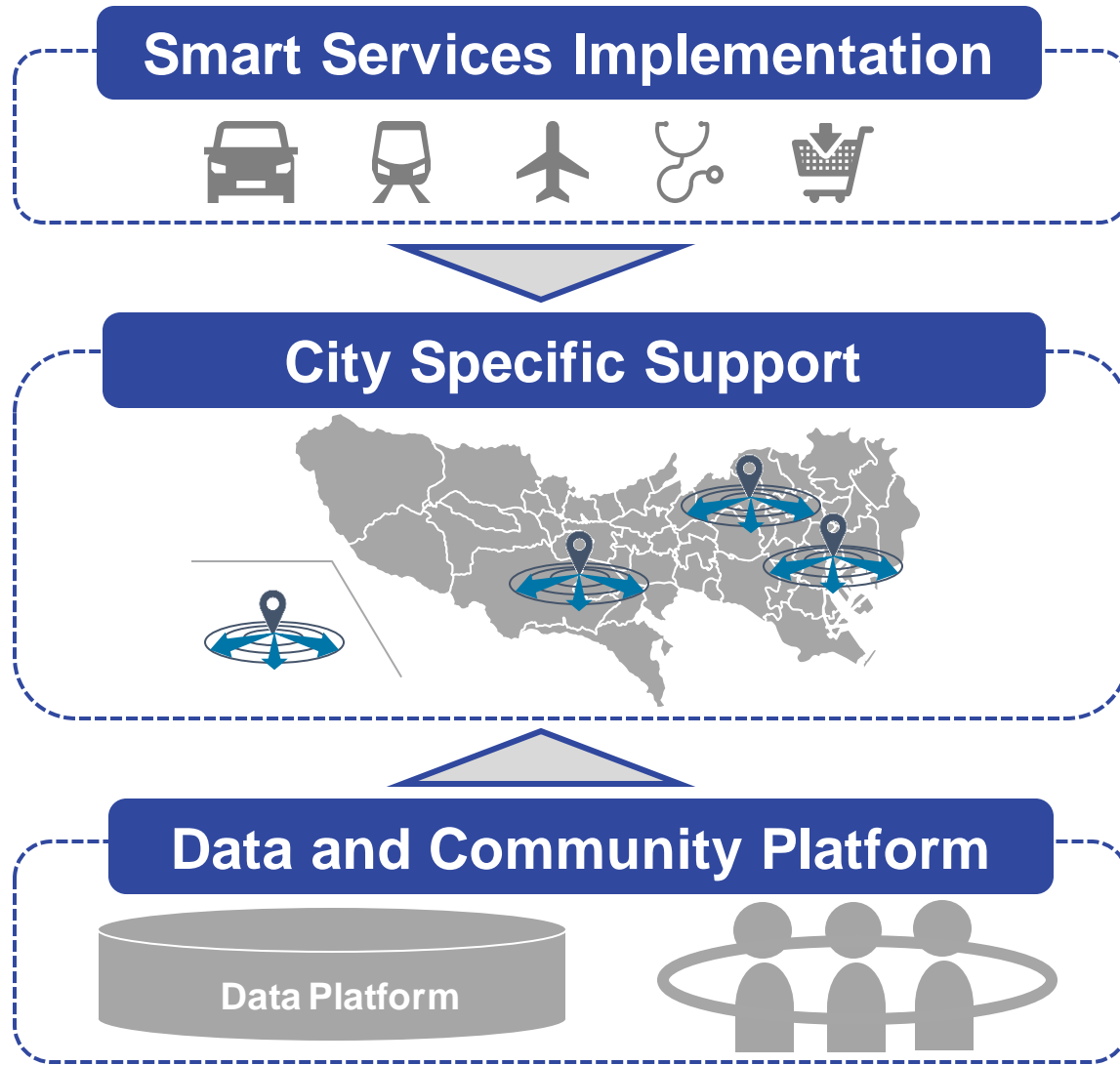
Strategy 3: Developing specialized human resources for a digital society



The consortium is conducting courses in digital technology, internships, and design contests targeting students to foster digital talents who could solve the challenges of Nishi-Shinjuku using digital technology.

For students, there are several benefits such as being able to work on solving social issues, finding like-minded peers with interests in digital technology and social challenges, and learning from experts in the field.

Multi-layered supports system for achieving Smart Tokyo



In addition to initiatives in the leading areas, we, the Tokyo Metropolitan government, provide multi-layered supports system to those involved in smart city initiatives. The main systems of support relate to “Smart Service Implementation”, “City-Specific Support”, and “Data and Community Platform Resources”.

For Smart Services Implementation, we help implement new services in collaboration with each city's startups.

In addition, we provide Smart City Studies, like Nishi-Shinjuku to use as reference to individual developing municipalities as part of our City Specific Support. There is also technical and financial support for municipalities creating other smart cities.

Finally, as the foundation of support is our Data and Community Platform which will distribute data to all municipalities and collaborators like startups. Also, we plan to foster smarter communities through a networking platform and events.

TMG will take initiative in building collaborative models in Smart Tokyo

We will enhance the quality of life of Tokyo residents thorough innovative digital services in collaboration with industry, academia and government.

