

# Re-envisioning Collaborative Research Environments

Proximity and collaboration offer clear advantages for translational research. Recognizing the urgency of science and R&D to solve global challenges, UIDP held a virtual workshop in April 2021, bringing together more than 60 participants representing university and industry perspectives. In an interactive setting, they considered recent and ongoing developments shaping collaborative work and shared their ideas for changes they would like to see in an ideal future. Five major themes emerged from the workshop.

## Planning Framework: Five Themes Shaping Today's Research Environments

### SERENDIPITY

Teams value flexibility but deeply miss an 'osmosis of knowledge' that comes from chance meetings in the work environment.

### TRUST

Researchers want to create a culture of trust that clearly values collaborative research within an institution's reward structure.

### RISK

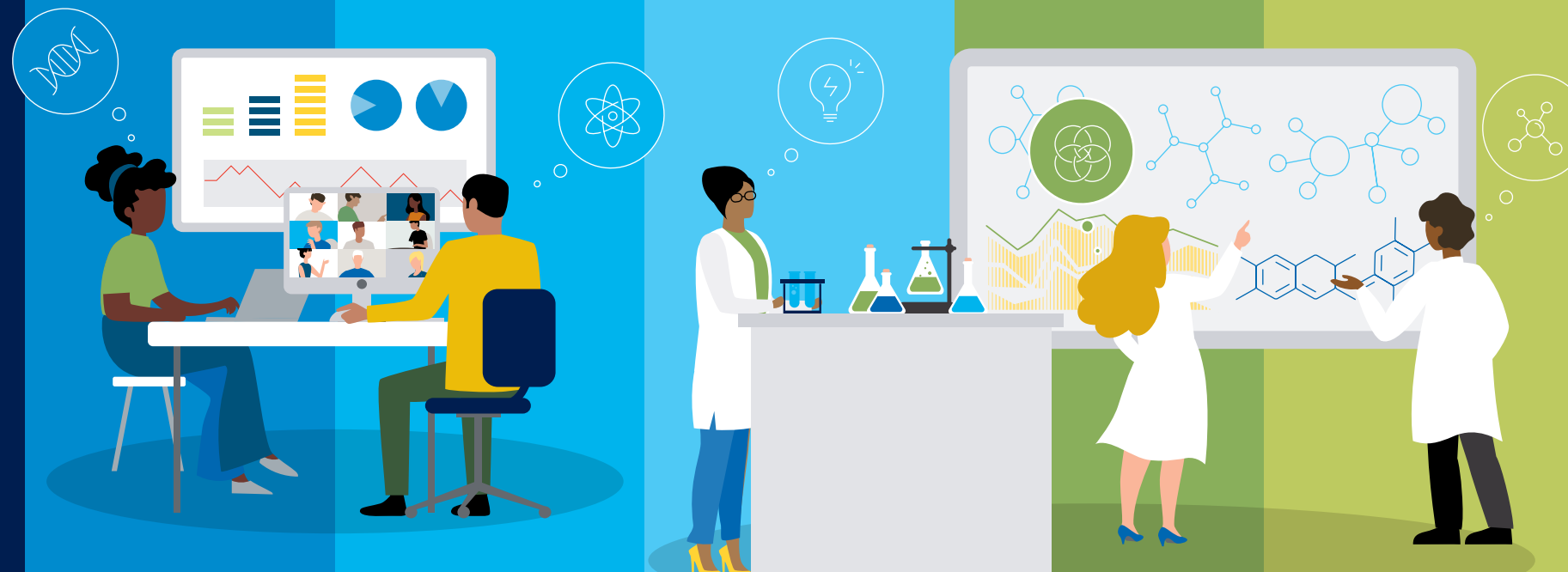
Institutional leaders need to prioritize innovation and support exploration at the edges of research fields.

### BALANCE

The new scientific workplace requires spaces, tools, and policies that enable both collaborative work and individual focus.

### INCLUSIVITY

Organizations need to champion diverse, multi-disciplinary teams and focus on creating purposeful spaces to support research teams.



CANNONDESIGN



Beyond these themes, workshop participants identified three fundamental, overarching concepts that influence the evolution of today's research environments.

### GOVERNANCE STRUCTURES

Putting in place the right incentives, management, and institutional controls to enable teams to have success and secure information across parties.

### CONVERGENCE RESEARCH

Effective collaboration among different disciplines that is required to tackle the thorniest research projects.

### TRANSLATIONAL SCIENCE

Developing scientific research in collaboration between university and industry partners, often with a go-to-market strategy in mind.